



Annual Production Sale



Sunday

MARCH 13 2016
1:00 PM

at the ranch • Florence, South Dakota

www.rbmlivestock.com



Sunday

MARCH 13

2016

1:00 PM

at the ranch • Florence, South Dakota

Lunch: 11:30 A.M. – 1:00 P.M

SALE INFORMATION

Sale Location 44115 155th Street, Florence, SD 57235
Directions from Florence: West on Highway 20 to 441st Avenue, then 3 miles north and 1/2 mile east or 23 miles northwest of Watertown or 25 miles south-east of Webster.

Sale Day Numbers RBM Sale Barn: (605) 758-2456
Mike Bergh Cell: (605) 881-1652
Ryan Bergh Cell: (605) 881-7499

Auctioneer Dustin Carter, Vermillion, SD • (712) 898-9972

Livestock Reps Donnie Leddy; *The Cattle Business Weekly*, 605-695-0113
Chris Effling; *Tri-State Livestock News* 605-769-0142
Jeff Kapperman; *TriState Neighbor*, 605-940-5104
Colt Keffer; *Charolais Journal*, 765-376-8784
Vern Frey; *Frey Marketing* 701-537-5383

Volume Discount Purchased by One Firm: Bulls only
– 3 Bulls – 3% discount
– 4 Bulls – 4% discount
– 5 Bulls – 5% discount
– Maximum of 10%



Herd Health Birth: Solid dose neck pill covering all bacterial aspects of pasteurella Mycoplasma. Turnout: 7-way/IBR, BVD, BRSV, PI3, spore pill. Preweaning: IBR, BVD, BRSV, PI3, solid dose neck pill, Pasteurella Mycoplasma. Weaning: Afterwean (booster of IBR, BVD, BRSV, PI3 of greater magnitude) Semen testing: Lepto Vibrio, all strains IBR, BRSV, BVD, PI3, Harjo-Bovis; Anthrax, Foot Rot & Pinkeye and injectible Dectomax

Defects All animals are AM, NH, CA and DD free by pedigree or test. Lots 1, 2, 3, 41 and 48 results available March 1.

Wintering of bulls Bulls are kept free of charge until May 1st

Delivery Bulls Only, \$100 bill if you take bull home sale day. Delivery will start immediately following sale. Females – we will help arrange trucking.

Liability All persons attending this sale do so at their own risk.

Semen Interest RBM Livestock will be retaining one-third revenue sharing semen interest in all bulls selling. This means if we would like to collect semen on the bull for our own use, we would have the option to do so. Also, if semen is sold we would retain one-third revenue. The new owners of the bulls will have full possession and full salvage value.

Guarantee – the RBM Guarantee – the best in the cattle business.

Watch & bid online for FREE at DVAuction.com

Buying online is as easy as 1, 2, 3...

1. Create an account at www.dvauction.com under the “register” tab
2. Apply for bidding approval by clicking on the “details” tab at least 24 hours prior to the auction-a DV representative will notify you once you have been approved
3. Tune in for the sale and make your purchases!

High speed internet is required for bidding-be sure to check the lag-time monitor in the top left corner to ensure real-time broadcasts.

Proxy bidding-register a proxy bid & let our system represent your bid while you're away. Look for the “proxy bid” tab on the auction listing, and fill in your maximum bids. We'll handle the rest!

Having troubles? You can type a message to the operator or call (402) 474-5557.

DVAuction DVA Rep. Justin Dikoff (605) 290-0635 – email jdikoff@dvauction.com
Please feel free to contact me with questions about the sale or to view the cattle.

EPDs updated as of 2-2-16

You're not just buying a bull but a PROGRAM!

RBM LIVESTOCK

Mike & Ryan Bergh Families
44115 155th St.
Florence, SD 57235

Best guarantee in the business – the RBM Guarantee

Welcome to our annual sale – 2016 edition

Welcome to the 2016 edition of the RBM Bull & Female Sale. It is with great pride that we bring this set of cattle to you. We have never been more excited about a set of cattle as we are of these.



The NEXT STEP... as we look back over the last year, we have seen ups and downs. As we look ahead, the NEXT STEP is full of opportunity. We feel that those that have cattle with a PROGRAM behind them will receive a premium over commodity cattle. We have had the opportunity to bid and buy a lot of RBM genetics in the auction markets. It is very humbling and rewarding to see our customers receive premium for their cattle. This is something that our customers have earned and deserved. It is something we strive for here at RBM.

The NEXT STEP... as you look through the offering, we think you will find cattle that combine multiple traits and excel. We here at RBM believe in these cattle and stand behind the cattle and the cattlemen that buy them.

The NEXT STEP... as you have seen, there have been some changes here over the last few years as this is a video auction; all lots will be viewed on a big screen TV. (No cattle will go through the ring.) The NEXT STEP, we will be displaying the cattle in their normal pens. We will have them sorted mid-sale week. This will be easier to view the cattle in their own environment with more space.

The NEXT STEP... this year we will be offering all the registered cows that calve after March 1. We feel these cows will continue to produce and make money for the new owners. They are not culls as we try to move our calving date forward; this is an opportunity for our customers to take the NEXT STEP. You will also notice that we have added commercial bred heifers; this set has never been offered before or topped. It is a small group we bred for this sale.

The NEXT STEP... all bulls have been i50K tested. This helped us insure accuracy in every bull. See page 24 for details.

The NEXT STEP... as you have probably figured out by now, Prairie Pride Next Step 2036 is a new sire we used heavily here. We are very excited about these cattle. We think it will drive you, our customers, to the NEXT STEP and in turn make more \$\$\$ for you.

The Berghs

Mike & Barb

Ryan & Kim



Mike, Barb, Ryan, Kim, Tate, Trevor & Ty Bergh

HERD SIRE PRAIRIE PRIDE NEXT STEP 2036



Reg. #:17367599 BD: 03/19/12 Tattoo: 2036 [DDF]

EPDs	BW	WW	YW	Milk	Marb	RE	\$B
	-1.4	+63	+129	+35	+0.10	+0.44	+136.21

We are very excited to offer our first set of bulls out of Next Step. His pedigree is outcross to most everything in the breed. Calving Ease - Length of Body - Performance. We think the females may be the NEXT STEP in making a great cow herd.

- B/R DESTINATION 727
- B/R DESTINATION 727-928
- B/R BLACKCAP EMPRESS 558
- SYDGEN 928 DESTINATION 5420**
- SITZ TRAVELER 9929
- SHADY BROOK ENTENSE 76D 29H
- BT EVERELDA ENTENSE 76D
- A A R NEW TREND
- BOYD NEW DAY 8005
- S V F FOREVER LADY 57D
- FLYING V MISS PRIDE 426**
- W W TRAVELER 58 DLX0362
- FLYING V PRIDE 1290
- V A P MISS PRIDE 164



FLYING V MISS PRIDE 426
Dam of Prairie Pride Next Step 2036



DERNER ANNIES 813 085
Donor Dam of Lots 1-3 & 41

1 RBM NEXT STEP C01

Tag#: V807 Reg. #: +18336334 Tattoo: C01
 BD: 12/23/14 BW: 81 WW/Ratio: 735/100 YW/Ratio: 1377/100
EPDs BW WW YW Milk REA Fat
 -2.4 +62 +119 +33 +0.45 +0.024
 ULTRASOUND: %IMF/Ratio: 3.69/71 Ribeye/Ratio: 13.7/90 Jan. 13 Wt.: 1464
 SYDGEN 928 DESTINATION 5420 B/R DESTINATION 727-928
PRAIRIE PRIDE NEXT STEP 2036 SHADY BROOK ENTENSE 76D 29H
 FLYING V MISS PRIDE 426 BOYD NEW DAY 8005
 S A V FINAL ANSWER 0035 SITZ TRAVELER 8180
DERNER ANNIES 813 085 S A V EMULOUS 8145
 DERNER ANNIES 610 813 LCC NEW STANDARD
 DERNER ANNIES 48 610

ISOK Lots 1-3 are ET brothers. Top 3% CED, 2% BW, 10% WW, 2% YW, 1% SW - Heifer bull

2 RBM NEXT STEP C03

Tag#: V802 Reg. #: +18336327 Tattoo: C03
 BD: 12/23/14 BW: 83 WW/Ratio: 749/100 YW/Ratio: 1363/100
EPDs BW WW YW Milk REA Fat
 -1.5 +58 +113 +34 +0.47 +0.032
 ULTRASOUND: %IMF/Ratio: 3.40/66 Ribeye/Ratio: 14.2/93 Jan. 13 Wt.: 1446

ISOK Lots 1-3 are ET brothers. Top 5% BW, 5% YW, 3% SW, 4% SF - Heifer bull

3 RBM NEXT STEP C04

Tag#: 816 Reg. #: +18336332 Tattoo: C04
 BD: 12/23/14 BW: 78 WW/Ratio: 688/97 YW/Ratio: 1344/99
EPDs BW WW YW Milk REA Fat
 -1.8 +56 +109 +30 +0.46 +0.042
 ULTRASOUND: %IMF/Ratio: 4.00/79 Ribeye/Ratio: 14.2/97 Jan. 13 Wt.: 1434

ISOK Lots 1-3 are ET brothers. Top 3% CED, 4% BW, 10% SW, 10% SF - Heifer bull



ALC BLACKBIRD 104U
Donor Dam of Lots 4-9, 33-34, 40 & 42-44

5 RBM NEXT STEP C08

Tag#: V811 Reg. #: +18336339 Tattoo: C08

BD: 12/23/14 BW: 67 WW/Ratio: 749/100 YW/Ratio: 1415/100

EPDs	BW	WW	YW	Milk	REA	Fat
	-1.2	+52	+100	+38	+0.17	+0.017

ULTRASOUND: %IMF/Ratio: 4.85/93 Ribeye/Ratio: 14.2/93 Jan. 13 Wt.: 1506

i50K Lots 4-9 are ET brothers. Heifer bull

6 RBM NEXT STEP C15

Tag#: 133 Reg. #: +18336325 Tattoo: C15

BD: 12/26/14 BW: 74 WW/Ratio: 758/107 YW/Ratio: 1420/104

EPDs	BW	WW	YW	Milk	REA	Fat
	-1.8	+52	+102	+36	+0.30	+0

ULTRASOUND: %IMF/Ratio: 5.22/103 Ribeye/Ratio: 14.8/101 Jan. 13 Wt.: 1488

i50K Lots 4-9 are ET brothers. Heifer bull

7 RBM NEXT STEP C17

Tag#: V831 Reg. #: +18336326 Tattoo: C17

BD: 12/27/14 BW: 83 WW/Ratio: 715/100 YW/Ratio: 1443/100

EPDs	BW	WW	YW	Milk	REA	Fat
	-2.7	+47	+99	+35	+0.19	+0.009

ULTRASOUND: %IMF/Ratio: 5.05/97 Ribeye/Ratio: 15.6/103 Jan. 13 Wt.: 1534

i50K Lots 4-9 are ET brothers. Heifer bull

8 RBM NEXT STEP C21

Tag#: 146 Reg. #: +18336331 Tattoo: C21

BD: 12/28/14 BW: 72 WW/Ratio: 720/102 YW/Ratio: 1389/102

EPDs	BW	WW	YW	Milk	REA	Fat
	-1.1	+52	+104	+37	+0.21	+0.036

ULTRASOUND: %IMF/Ratio: 4.92/97 Ribeye/Ratio: 14.3/98 Jan. 13 Wt.: 1454

i50K Lots 4-9 are ET brothers. Heifer bull

9 RBM NEXT STEP C23

Tag#: 153 Reg. #: +18336324 Tattoo: C23

BD: 12/30/14 BW: 85 WW/Ratio: 729/103 YW/Ratio: 1371/101

EPDs	BW	WW	YW	Milk	REA	Fat
	-0.6	+52	+104	+37	+0.35	-0.006

ULTRASOUND: %IMF/Ratio: 5.53/109 Ribeye/Ratio: 16.0/110 Jan. 13 Wt.: 1426

i50K Lots 4-9 are ET brothers. Heifer bull

4 RBM NEXT STEP C07

Tag#: Y182 Reg. #: +18336338 Tattoo: C07

BD: 12/23/14 BW: 74 WW/Ratio: 665/94 YW/Ratio: 1289/95

EPDs	BW	WW	YW	Milk	REA	Fat
	-1.2	+49	+100	+37	+0.32	+0.005

ULTRASOUND: %IMF/Ratio: 5.70/112 Ribeye/Ratio: 13.6/93 Jan. 13 Wt.: 1360

SYDGEN 928 DESTINATION 5420 B/R DESTINATION 727-928
PRAIRIE PRIDE NEXT STEP 2036 SHADY BROOK ENTENSE 76D 29H
 FLYING V MISS PRIDE 426 BOYD NEW DAY 8005
 MYTTY IN FOCUS FLYING V PRIDE 1290
ALC BLACKBIRD 104U S A F FOCUS OF E R
 ALC BLACKBIRD 6707 MYTTY COUNTESS 906
 CONNEALY LEAD ON
 BALDRIDGE BLACKBIRD M868

i50K Lots 4-9 are ET brothers. Top 10% BW, 3% SW - Heifer bull. Here is an opportunity to buy six full brothers. Calving ease bulls out of a dam that has proven herself. She is the dam of RBM CC7 Y40, high selling calving ease bull in our 2012 sale to Barns Angus for \$18,000.



10 RBM NEXT STEP C35

Tag#: A301 Reg. #: 18336316 Tattoo: C35

BD: 01/03/15 BW: 76 WW/Ratio: 731/104 YW/Ratio: 1429/109

EPDs	BW	WW	YW	Milk	REA	Fat
	-1.2	+55	+114	+30	+0.19	+0.015

ULTRASOUND: %IMF/Ratio: 4.89/96 Ribeye/Ratio: 15.1/103 Jan. 13 Wt.: 1440

SYDGEN 928 DESTINATION 5420 B/R DESTINATION 727-928
PRAIRIE PRIDE NEXT STEP 2036 SHADY BROOK ENTENSE 76D 29H
 FLYING V MISS PRIDE 426 BOYD NEW DAY 8005
 WK BOBCAT FLYING V PRIDE 1290
RBM EVERGREEN A301 CONNEALY RIGHT ANSWER 746
 WOODHILL EVERGREEN 194K-77M WK MISS ANGUS 7127
 WOODHILL EVERGREEN 1188-194K BON VIEW NEW DESIGN 878

i50K Top 10% CED, 10% BW, 4% YW, 10% SW, 2% SF - If you like them deep, thick and stout, here is your bull. Backed by maternal grand dam 77M, who has been known for her maternal traits. Out of a first calf heifer. Heifer bull.

11 RBM NEXT STEP C45

Tag#: Y09 Reg. #: 18336298 Tattoo: C45
 BD: 01/08/15 BW: 74 WW/Ratio: 655/92 YW/Ratio: 1338/100
EPDs BW WW YW Milk REA Fat
 -1.7 +56 +113 +25 +0.58 -0.008
 ULTRASOUND: %IMF/Ratio: 5.61/113 Ribeye/Ratio: 14.2/97 Jan. 13 Wt.: 1366
 SYDGEN 928 DESTINATION 5420 B/R DESTINATION 727-928
 SHADY BROOK ENTENSE 76D 29H
PRAIRIE PRIDE NEXT STEP 2036
 FLYING V MISS PRIDE 426
 BOYD NEW DAY 8005
 FLYING V PRIDE 1290
 S A F CONNECTION
 SYDGEN FOREVER LADY 4087
RBM ERICA Y09
 CONNEALY DANNY BOY
 ALC ERICA V01U ALC ERICA J14S

ISOK Top 5% CED, 4% BW, 5% SW, 3% SF - Heifer bull

13 RBM NEXT STEP C49

Tag#: Z74 Reg. #: 18336300 Tattoo: C49
 BD: 01/08/15 BW: 76 WW/Ratio: 698/99 YW/Ratio: 1328/102
EPDs BW WW YW Milk REA Fat
 +0.4 +56 +114 +29 +0.19 -0.004
 ULTRASOUND: %IMF/Ratio: 4.70/93 Ribeye/Ratio: 14.4/98 Jan. 13 Wt.: 1354
 SYDGEN 928 DESTINATION 5420 B/R DESTINATION 727-928
 SHADY BROOK ENTENSE 76D 29H
PRAIRIE PRIDE NEXT STEP 2036
 FLYING V MISS PRIDE 426
 BOYD NEW DAY 8005
 FLYING V PRIDE 1290
 MYTTY IN FOCUS
RBM BAND Z74
 SA W PRIME FOCUS 9053
 SAW MISS PRIME FRONTIER 7053
 RBM SKY BAND X058
 SITZ UPWARD 307R
 RBM RITO 4L6

ISOK Top 3% SF, 4% YW - Heifer bull



16 RBM NEXT STEP C55

Tag#: Y88 Reg. #: 18336319 Tattoo: C55
 BD: 01/09/15 BW: 75 WW/Ratio: 672/94 YW/Ratio: 1347/100
EPDs BW WW YW Milk REA Fat
 -2.0 +52 +100 +30 +0.55 -0.018
 ULTRASOUND: %IMF/Ratio: 6.29/127 Ribeye/Ratio: 15.3/104 Jan. 13 Wt.: 1370
 SYDGEN 928 DESTINATION 5420 B/R DESTINATION 727-928
 SHADY BROOK ENTENSE 76D 29H
PRAIRIE PRIDE NEXT STEP 2036
 FLYING V MISS PRIDE 426
 BOYD NEW DAY 8005
 FLYING V PRIDE 1290
 WK DESIGNERS PRIDE 1612
RBM GENEVETTE Y88
 JAR DESIGNERS PRIDE 619 831
 JAR ELIMINATOR 409 619
 MOHNEN 6106-655
 D S MISS GENEVETTE 075

ISOK Heifer bull. Dam's production BW 3 @ 94, YW 2 @ 101, IMF 2 @ 109, REA 2 @ 109. Top 3% CED, 3% BW, 5% SW. It's hard to pick a favorite bull, but this one is for sure on the top of the list - calving ease yet stout and long bodied out of a really good female.

12 RBM NEXT STEP C47

Tag#: Z71 Reg. #: 18336305 Tattoo: C47
 BD: 01/08/15 BW: 74 WW/Ratio: 694/99 YW/Ratio: 1312/101
EPDs BW WW YW Milk REA Fat
 -2.3 +55 +110 +32 +0.45 -0.020
 ULTRASOUND: %IMF/Ratio: 3.16/62 Ribeye/Ratio: 15.2/103 Jan. 13 Wt.: 1334
 SYDGEN 928 DESTINATION 5420 B/R DESTINATION 727-928
 SHADY BROOK ENTENSE 76D 29H
PRAIRIE PRIDE NEXT STEP 2036
 FLYING V MISS PRIDE 426
 BOYD NEW DAY 8005
 FLYING V PRIDE 1290
 TC FRICTION 5130
RBM PRIDE Z71
 H&K FRICTION H141
 BLKCP EMPRESS ELLSTON C171
 MILLERS YUKON K98
 DS MISS PRIDE 2913

ISOK Top 1% CED, 2% BW, 5% SW, 3% SF - Heifer bull

14 RBM NEXT STEP C53

Tag#: Z24 Reg. #: 18336308 Tattoo: C53
 BD: 01/09/15 BW: 78 WW/Ratio: 726/103 YW/Ratio: 1352/103
EPDs BW WW YW Milk REA Fat
 +1.5 +61 +109 +29 +0.28 -0.011
 ULTRASOUND: %IMF/Ratio: 3.94/78 Ribeye/Ratio: 15.4/107 Jan. 13 Wt.: 1370
 SYDGEN 928 DESTINATION 5420 B/R DESTINATION 727-928
 SHADY BROOK ENTENSE 76D 29H
PRAIRIE PRIDE NEXT STEP 2036
 FLYING V MISS PRIDE 426
 BOYD NEW DAY 8005
 FLYING V PRIDE 1290
 MYTTY IN FOCUS
RBM BLACKETTE LADY Z24
 CONNEALY IN FOCUS 4925
 BLACK CANA OF CONANGA 206
 RBM BLACKETTE LADY X005
 GENETICS BY DESIGN 049
 OX BOW BLACKETTE LADY 853

ISOK Top 10% WW, 10% YW, 10% SW, 10% SF - Heifer bull

15 RBM NEXT STEP C54

Tag#: Z08 Reg. #: 18336313 Tattoo: C54
 BD: 01/09/15 BW: 66 WW/Ratio: 649/92 YW/Ratio: 1268/97
EPDs BW WW YW Milk REA Fat
 -2.9 +56 +104 +27 +0.19 +0.007
 ULTRASOUND: %IMF/Ratio: 5.60/110 Ribeye/Ratio: 13.5/92 Jan. 13 Wt.: 1294
 SYDGEN 928 DESTINATION 5420 B/R DESTINATION 727-928
 SHADY BROOK ENTENSE 76D 29H
PRAIRIE PRIDE NEXT STEP 2036
 FLYING V MISS PRIDE 426
 BOYD NEW DAY 8005
 FLYING V PRIDE 1290
 MYTTY IN FOCUS
RBM ELSIE Z08
 CONNEALY IN FOCUS 4925
 BLACK CANA OF CONANGA 206
 RBM ELSIE X012
 GENETICS BY DESIGN 049
 SYDGEN ELSIE A358

ISOK Top 2% CED, 1% BW - Heifer bull



17 RBM NEXT STEP C57

Tag#: Y212 Reg. #: 18336293 Tattoo: C57

BD: 01/10/15	BW: 76	WW/Ratio: 677/95	YW/Ratio: 1258/94
--------------	--------	------------------	-------------------

EPDs	BW	WW	YW	Milk	REA	Fat
	-0.2	+52	+93	+24	+0.33	+0.036

ULTRASOUND: %IMF/Ratio: 4.55/92 Ribeye/Ratio: 13.5/92 Jan. 13 Wt.: 1268

SYDGEN 928 DESTINATION 5420 B/R DESTINATION 727-928
 PRAIRIE PRIDE NEXT STEP 2036 SHADY BROOK ENTENSE 76D 29H
 FLYING V MISS PRIDE 426 BOYD NEW DAY 8005
 RIVER HILLS OBJECTIVE T195 FLYING V PRIDE 1290
 RBM PRINCESS Y212 S S OBJECTIVE T510 OT26
 14075 OF R B M 314 RIVER HILLS BARBARA R330
 PLAINVIEW NEW DESIGN 48B
 IAR 0136 TRAV PRINCESS 2050



Heifer bull

18 RBM NEXT STEP C58

Tag#: Z233 Reg. #: 18336328 Tattoo: C58

BD: 01/10/15	BW: 82	WW/Ratio: 706/101	YW/Ratio: 1384/106
--------------	--------	-------------------	--------------------

EPDs	BW	WW	YW	Milk	REA	Fat
	-0.5	+62	+123	+34	+0.37	+0.006

ULTRASOUND: %IMF/Ratio: 4.60/91 Ribeye/Ratio: 14.3/97 Jan. 13 Wt.: 1416

SYDGEN 928 DESTINATION 5420 B/R DESTINATION 727-928
 PRAIRIE PRIDE NEXT STEP 2036 SHADY BROOK ENTENSE 76D 29H
 FLYING V MISS PRIDE 426 BOYD NEW DAY 8005
 VAR ROCKY 80029 FLYING V PRIDE 1290
 RBM CHARISMA Z233 HARB ONWARD 786 J H
 BASIN CHARISMA U691 VERMILION LASS 0029
 EXAR 263C
 BASIN CHARISMA 4866



Heifer bull - Top 10% WW, 4% SW, 1% SF



19 RBM NEXT STEP C71

Tag#: Z93 Reg. #: 18336323 Tattoo: C71

BD: 01/14/15	BW: 90	WW/Ratio: 724/103	YW/Ratio: 1367/105
--------------	--------	-------------------	--------------------

EPDs	BW	WW	YW	Milk	REA	Fat
	+2.4	+56	+110	+31	+0.41	+0.009

ULTRASOUND: %IMF/Ratio: 4.31/85 Ribeye/Ratio: 15.2/103 Jan. 13 Wt.: 1378

SYDGEN 928 DESTINATION 5420 B/R DESTINATION 727-928
 PRAIRIE PRIDE NEXT STEP 2036 SHADY BROOK ENTENSE 76D 29H
 FLYING V MISS PRIDE 426 BOYD NEW DAY 8005
 H C C IMPRESSION 9769 CONNEALY IMPRESSION
 RBM STAN Z93 SITZ BAR MAID 2345
 RBM PACKER 456 WOODHILL PACKER 194K-61N
 14075 OF R B M 284



Top 10% YW, 3% SF - A real world beef bull. Dam's production WW 2@ 105, YW 2@ 106, 2 @ 103 REA



20 RBM NEXT STEP C72

Tag#: Y11 Reg. #: 18336330 Tattoo: C72

BD: 01/14/15	BW: 85	WW/Ratio: 709/99	YW/Ratio: 1440/107
--------------	--------	------------------	--------------------

EPDs	BW	WW	YW	Milk	REA	Fat
	-0.4	+67	+126	+33	+0.42	-0.013

ULTRASOUND: %IMF/Ratio: 5.10/103 Ribeye/Ratio: 15.2/103 Jan. 13 Wt.: 1454

SYDGEN 928 DESTINATION 5420 B/R DESTINATION 727-928
 PRAIRIE PRIDE NEXT STEP 2036 SHADY BROOK ENTENSE 76D 29H
 FLYING V MISS PRIDE 426 BOYD NEW DAY 8005
 GENETICS BY DESIGN 049 FLYING V PRIDE 1290
 RBM RITO ROSE Y11 B/R NEW DESIGN 036
 RBM WULFFS 6106-1219 G G CLARA 859
 MOHNEN 6106-655
 CA ROSE 903 6174 410



Heifer bull - Top 10% CED, 2% WW, 1% YW, 1% SW, 1% SF, 4% SB

21 RBM NEXT STEP C77

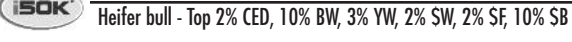
Tag#: Z05 Reg. #: 18336320 Tattoo: C77

BD: 01/15/15	BW: 82	WW/Ratio: 698/99	YW/Ratio: 1357/104
--------------	--------	------------------	--------------------

EPDs	BW	WW	YW	Milk	REA	Fat
	-0.8	+59	+115	+33	+0.62	+0

ULTRASOUND: %IMF/Ratio: 3.42/67 Ribeye/Ratio: 15.9/108 Jan. 13 Wt.: 1372

SYDGEN 928 DESTINATION 5420 B/R DESTINATION 727-928
 PRAIRIE PRIDE NEXT STEP 2036 SHADY BROOK ENTENSE 76D 29H
 FLYING V MISS PRIDE 426 BOYD NEW DAY 8005
 GENETICS BY DESIGN 049 FLYING V PRIDE 1290
 RBM PRIDE Z05 B/R NEW DESIGN 036
 RBM PRIDE X121 G G CLARA 859
 RBM YUKON 977 SITZ UPWARD 307R



Heifer bull - Top 2% CED, 10% BW, 3% YW, 2% SW, 2% SF, 10% SB

CALVING EASE BULLS SACRIFICE PERFORMANCE?

Maybe in years past this statement would be true, but here at RBM, we believe in cattle that have calving ease that will grow and perform without sacrificing the end product. As you look through the offering, you will find many bulls recommended for heifers. Don't be shy to use a recommended heifer bull on your mature cows as they will start little and will perform just like they have here.



22 RBM NEXT STEP C80

Tag#: U691 Reg. #: 18336337 Tattoo: C80

BD: 01/17/15 BW: 94 WW/Ratio: 835/117 YW/Ratio: 1584/118

EPDs	BW	WW	YW	Milk	REA	Fat
	+1.7	+61	+126	+36	+0.54	-0.013

ULTRASOUND: %IMF/Ratio: 5.13/103 Ribeye/Ratio: 17.4/118 Jan. 13 Wt.: 1596

PRAIRIE PRIDE NEXT STEP 2036
 FLYING V MISS PRIDE 426
 EXAR 263C
BASIN CHARISMA U691
 BASIN CHARISMA 4866

B/R DESTINATION 727-928
 SHADY BROOK ENTENSE 76D 29H
 BOYD NEW DAY 8005
 FLYING V PRIDE 1290
 BON VIEW NEW DESIGN 1407
 EXAR JUNE C 3577
 BASIN RAINMAKER 747L
 BASIN CHARISMA 1474

iSOK Words cannot describe how we feel about this bull. He has been one of the favorites here since birth. A natural calf out of the donor cow U691. If you want one that has calving ease, performance and carcass, here he is. We think this bull has a lot of future. Top 10% WW, 1% YW, 5% SW, 1% SF, 10% SB - Maternal brother to RBM Rocky Z232. He sired lot 51-53 in this sale.



BASIN CHARISMA U691
 Dam of Lots 22 & 82
 Dam of Reference Sires RBM Rocky Z220
 & RBM Rocky Z232

23 RBM NEXT STEP C92

Tag#: FB217 Reg. #: 18336310 Tattoo: C92

BD: 01/24/15 BW: 76 WW/Ratio: 721/101 YW/Ratio: 1425/106

EPDs	BW	WW	YW	Milk	REA	Fat
	-1.1	+55	+111	+23	+0.33	-0.016

ULTRASOUND: %IMF/Ratio: 6.22/125 Ribeye/Ratio: 14.5/99 Jan. 13 Wt.: 1420

PRAIRIE PRIDE NEXT STEP 2036
 FLYING V MISS PRIDE 426
 RIVER HILLS RAKETEER R385
RBM RAKETEER A217
 616 OF R B M 534

B/R DESTINATION 727-928
 SHADY BROOK ENTENSE 76D 29H
 BOYD NEW DAY 8005
 FLYING V PRIDE 1290
 BR MIDLAND
 BAR S EDELLA 3047
 W A F 616 RITO 32
 NEUTRON OF R B M X3 202

iSOK Heifer bull. Here is a natural calf from the 217 donor cow whose sons are lots 37-39. Top 3% CED, 10% BW, 10% YW, 2% SF

24 RBM NEXT STEP C98

Tag#: Y28 Reg. #: 18336312 Tattoo: C98

BD: 01/30/15 BW: 77 WW/Ratio: 649/91 YW/Ratio: 1220/91

EPDs	BW	WW	YW	Milk	REA	Fat
	-2.4	+42	+89	+28	+0.36	-0.050

ULTRASOUND: %IMF/Ratio: 3.61/73 Ribeye/Ratio: 14.1/96 Jan. 13 Wt.: 1182

PRAIRIE PRIDE NEXT STEP 2036
 FLYING V MISS PRIDE 426
 SYDGEN C C & 7
RBM QUEEN Y28
 SYDGEN 4646 ALLY 8131

B/R DESTINATION 727-928
 SHADY BROOK ENTENSE 76D 29H
 BOYD NEW DAY 8005
 FLYING V PRIDE 1290
 S A F CONNECTION
 SYDGEN FOREVER LADY 4087
 SYDGEN ALLY 4646
 SYDGEN ROYAL QUEEN 413

iSOK Heifer bull - Top 1% CED, 2% BW

25 RBM NEXT STEP C99

Tag#: Y61 Reg. #: 18336307 Tattoo: C99

BD: 01/30/15 BW: 82 WW/Ratio: 672/94 YW/Ratio: 1262/94

EPDs	BW	WW	YW	Milk	REA	Fat
	+0.3	+56	+104	+28	+0.39	-0.012

ULTRASOUND: %IMF/Ratio: 3.64/73 Ribeye/Ratio: 14.3/97 Jan. 13 Wt.: 1224

SYDGEN 928 DESTINATION 5420 B/R DESTINATION 727-928
 SHADY BROOK ENTENSE 76D 29H
PRAIRIE PRIDE NEXT STEP 2036
 FLYING V MISS PRIDE 426
 BOYD NEW DAY 8005
 FLYING V PRIDE 1290
 S A F CONNECTION
 SYDGEN FOREVER LADY 4087
RBM QUEEN ANN Y61
 R B M SUPERTREND 908
 S A V 8180 TRAVELER 004
 AMDAHL'S ANN SUPER TREND 818



26 RBM NEXT STEP C100

Tag#: Y45 Reg. #: 18336314 Tattoo: C100

BD: 01/30/15 BW: 82 WW/Ratio: 628/88 YW/Ratio: 1286/96

EPDs	BW	WW	YW	Milk	REA	Fat
	+0.2	+47	+100	+29	+0.36	-0.033

ULTRASOUND: %IMF/Ratio: 5.47/110 Ribeye/Ratio: 14.2/97 Jan. 13 Wt.: 1260

SYDGEN 928 DESTINATION 5420 B/R DESTINATION 727-928
 SHADY BROOK ENTENSE 76D 29H
PRAIRIE PRIDE NEXT STEP 2036
 FLYING V MISS PRIDE 426
 BOYD NEW DAY 8005
 FLYING V PRIDE 1290
 S A F CONNECTION
 SYDGEN FOREVER LADY 4087
RBM BLACK LADY Y45
 ALC BLACK LADY S16U
 S A V 8180 TRAVELER 004
 ALC BLACK LADY A05N



27 RBM NEXT STEP C105

Tag#: Y209 Reg. #: 18336299 Tattoo: C105

BD: 02/01/15 BW: 94 WW/Ratio: 756/106 YW/Ratio: 1370/102

EPDs	BW	WW	YW	Milk	REA	Fat
	+1.3	+57	+105	+29	+0.24	-0.004

ULTRASOUND: %IMF/Ratio: 4.16/84 Ribeye/Ratio: 13.4/91 Jan. 13 Wt.: 1318

SYDGEN 928 DESTINATION 5420 B/R DESTINATION 727-928
 SHADY BROOK ENTENSE 76D 29H
PRAIRIE PRIDE NEXT STEP 2036
 FLYING V MISS PRIDE 426
 BOYD NEW DAY 8005
 FLYING V PRIDE 1290
 BR MIDLAND
RBM MISS PRIDE Y209
 RIVER HILLS RAKETEER R385
 RBM YUKON 977
 BAR S EDELLA 3047
 MILLERS YUKON K98
 DS MISS PRIDE 2913



28 RBM NEXT STEP C143

Tag#: Y32 Reg. #: 18336297 Tattoo: C143

BD: 02/17/15 BW: 82 WW/Ratio: 599/84 YW/Ratio: 1253/94

EPDs	BW	WW	YW	Milk	REA	Fat
	-0.6	+57	+114	+22	+0.27	+0.009

ULTRASOUND: %IMF/Ratio: 4.49/91 Ribeye/Ratio: 14.4/98 Jan. 13 Wt.: 1188

SYDGEN 928 DESTINATION 5420 B/R DESTINATION 727-928
 SHADY BROOK ENTENSE 76D 29H
PRAIRIE PRIDE NEXT STEP 2036
 FLYING V MISS PRIDE 426
 BOYD NEW DAY 8005
 FLYING V PRIDE 1290
 B/R NEW DESIGN 036
RBM DESIGN Y32
 GENETICS BY DESIGN 049
 RBM USER FRIENDLY 559
 G A R CLARA 859
 G A R USER FRIENDLY
 RBM X3 706



29 RBM NEXT STEP C146

Tag#: Y97 Reg. #: 18336309 Tattoo: C146

BD: 02/17/15 BW: 82 WW/Ratio: 711/100 YW/Ratio: 1375/103

EPDs	BW	WW	YW	Milk	REA	Fat
	+0.3	+51	+101	+28	+0.13	+0.012

ULTRASOUND: %IMF/Ratio: 3.96/80 Ribeye/Ratio: 14.9/101 Jan. 13 Wt.: 1284

SYDGEN 928 DESTINATION 5420 B/R DESTINATION 727-928
 SHADY BROOK ENTENSE 76D 29H
PRAIRIE PRIDE NEXT STEP 2036
 FLYING V MISS PRIDE 426
 BOYD NEW DAY 8005
 FLYING V PRIDE 1290
 K C F BENNETT EFFICIENT
RBM ANVIL LASSIE Y97
 CAR EFFICIENT 534
 CAR MISS SUSIE 308
 CHESTNUT NEW DESIGN 112
 L A R MISS EXTRA 9805
 1407C OF R B M 864



30 RBM NEXT STEP C168

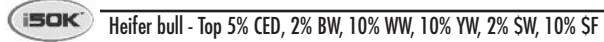
Tag#: Z25 Reg. #: 18336304 Tattoo: C168

BD: 02/23/15 BW: 72 WW/Ratio: 719/101 YW/Ratio: 1305/98

EPDs	BW	WW	YW	Milk	REA	Fat
	-2.2	+61	+107	+31	+0.53	-0.011

ULTRASOUND: %IMF/Ratio: 5.15/104 Ribeye/Ratio: 14.1/96 Jan. 13 Wt.: 1166

SYDGEN 928 DESTINATION 5420 B/R DESTINATION 727-928
 SHADY BROOK ENTENSE 76D 29H
PRAIRIE PRIDE NEXT STEP 2036
 FLYING V MISS PRIDE 426
 BOYD NEW DAY 8005
 FLYING V PRIDE 1290
 MYTTY IN FOCUS
RBM LUCY ANN Z25
 CONNEALY IN FOCUS 4925
 RBM LUCY ANN X006
 BLACK CANA OF CONANGA 206
 GENETICS BY DESIGN 049
 RBM QH OBJECTIVE 188



31 RBM NEXT STEP C177

Tag#: Y311 Reg. #: 18336292 Tattoo: C177

BD: 03/01/15 BW: 85 WW/Ratio: 701/98 YW/Ratio: 1426/105

EPDs	BW	WW	YW	Milk	REA	Fat
	-0.6	+53	+107	+29	+0.12	-0.036

ULTRASOUND: %IMF/Ratio: 4.63/93 Ribeye/Ratio: 14.4/98 Jan. 13 Wt.: 1268

SYDGEN 928 DESTINATION 5420 B/R DESTINATION 727-928
 SHADY BROOK ENTENSE 76D 29H
PRAIRIE PRIDE NEXT STEP 2036
 FLYING V MISS PRIDE 426
 BOYD NEW DAY 8005
 FLYING V PRIDE 1290
 S A F CONNECTION
RBM CLARA Y311
 SYDGEN C C & 7
 SYDGEN FOREVER LADY 4087
 J R JUICE 2005
 G G CLARA 200
 G G CLARA 859

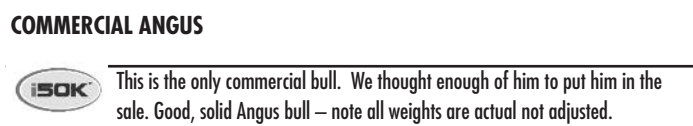


32 RBM NEXT STEP C50

Tag#: A12 Commercial Tattoo: C50

BD: 01/08/15 BW: 83 WW: 554 YW: 1314

SYDGEN 928 DESTINATION 5420 B/R DESTINATION 727-928
 SHADY BROOK ENTENSE 76D 29H
PRAIRIE PRIDE NEXT STEP 2036
 FLYING V MISS PRIDE 426
 BOYD NEW DAY 8005
 FLYING V PRIDE 1290





SYDGEN C C & 7

[AMF-CAF-DDF-NHF-OHF]

Reg. #: #15330743 BD: 01/13/06 Tattoo: 6099

EPDs	BW	WW	YW	Milk	Marb	RE	\$B
	+0.8	+53	+105	+33	+0.44	+0.84	+168.58

S A F CONNECTION

SYDGEN FOREVER LADY 4087

SVF GDAR 216 LTD
S A F ROYAL QUEEN 5084
SYDGEN 1407 CORONA 2016
S A F FOREVER LADY 8292

TRAVELER 124 G D A R
G D A R FOREVER LADY 718
BON VIEW BANDO 598
S A F ROYAL QUEEN 9022
BON VIEW NEW DESIGN 1407
V N A R PERFECTION 142F 180K
S A F NEUTRON
S A F FOREVER LADY 5138



33 RBM CC7 C90

Tag#: M962 Reg. #: +18356581 Tattoo: C90

BD: 01/20/15 BW: 95 WW/Ratio: 746/100 YW/Ratio: 1418/100

EPDs	BW	WW	YW	Milk	REA	Fat
	+0.1	+47	+90	+39	+0.36	-0.032

ULTRASOUND: %IMF/Ratio: 4.77/92 Ribeye/Ratio: 14.7/97 Jan. 13 Wt.: 1430

SYDGEN C C & 7

ALC BLACKBIRD I04U

S A F CONNECTION
SYDGEN FOREVER LADY 4087

MYTTY IN FOCUS
ALC BLACKBIRD 6707

SVF GDAR 216 LTD
S A F ROYAL QUEEN 5084
SYDGEN 1407 CORONA 2016
S A F FOREVER LADY 8292
S A F FOCUS OF E R
MYTTY COUNTLESS 906
CONNEALY LEAD ON
BALDRIDGE BLACKBIRD M868



Lots 33-34 are ET brothers. Heifer bull. Full Brother to RBM CC&7 Y40, who was the high seller in 2012 and has been used in many commercial heifer projects. The commercial bred heifers in this sale are bred to Y40.



34 RBM CC7 C95

Tag#: M92 Reg. #: +18356580 Tattoo: C95

BD: 01/24/15 BW: 95 WW/Ratio: 741/100 YW/Ratio: 1408/100

EPDs	BW	WW	YW	Milk	REA	Fat
	+1.5	+49	+96	+36	+0.57	-0.027

ULTRASOUND: %IMF/Ratio: 5.46/105 Ribeye/Ratio: 17.4/114 Jan. 13 Wt.: 1410



Lots 33-34 are ET brothers. Here is your chance to run two full brother calving ease specialists.

35 RBM SHREK C30

Tag#: A123 Reg. #: 18356640 Tattoo: C30

BD: 01/03/15 BW: 75 WW/Ratio: 721/103 YW/Ratio: 1127/86

EPDs	BW	WW	YW	Milk	REA	Fat
	+0.2	+53	+83	+27	+0.38	+0.027

ULTRASOUND: %IMF/Ratio: 4.58/90 Ribeye/Ratio: 13.5/92 Jan. 13 Wt.: 1086

CONNEALY SHREK 4242

RBM PRIDE A123

GAR-EGL PROTEGE
BLACK SHELL OF CONANGA 10
H&K CC&7 H198
RBM CROSSOVER 639

RITO 112 OF 2536 RITO 616
L B 6807 ISABEL 339
CONNEALY DANNY BOY
BLACK SHEBA OF CONANGA 010
SYDGEN C C & 7
BLACKCAP EMPRESS ELLSTON T15
BT CROSSOVER 758N
C A PRIDE 121 4216 L B



Heifer bull - Top 10% SW - 1/2 brother to high selling bull in 2015 to Haugen Angus, ND. What we have seen out of the Shrek cattle are they just keep getting better each day.

CONNEALY SHREK 4242

[DDF]

Reg. #: 16204949 BD: 01/28/08 Tattoo: 8241

EPDs	BW	WW	YW	Milk	Marb	RE	\$B
	+0.3	+71	+126	+25	+0.77	+0.57	+145.76

GAR-EGL PROTEGE

BLACK SHELL OF CONANGA 10

RITO 112 OF 2536 RITO 616
L B 6807 ISABEL 339
CONNEALY DANNY BOY
BLACK SHEBA OF CONANGA 010

RITO 616 OF 4B20 6807
G A R PRECISION 2536
D H D TRAVELER 6807
L B E31 ISABEL 168
CONNEALY TIMELINE
ENERGY OF CONANGA 4851
RITO 616 OF 4B20 6807
BLACK SUE OF CONANGA 349

36 RBM SHREK C74

Tag#: A30 Reg. #: 18356638 Tattoo: C74

BD: 01/14/15 BW: 70 WW/Ratio: 735/105 YW/Ratio: 1265/97

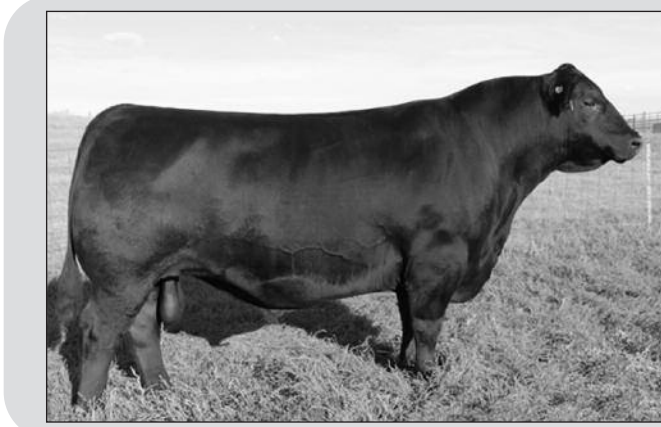
EPDs	BW	WW	YW	Milk	REA	Fat
	-2.1	+59	+105	+29	+0.71	+0.009

ULTRASOUND: %IMF/Ratio: 4.42/87 Ribeye/Ratio: 14.7/100 Jan. 13 Wt.: 1218

CONNEALY SHREK 4242
 GAR-EGL PROTEGE
 BLACK SHELL OF CONANGA 10
 RITO 112 OF 2536 RITO 616
 L B 6807 ISABEL 339
 CONNEALY DANNY BOY
 BLACK SHEBA OF CONANGA 010

RBM QUEEN A30
 RBM ANSWER X085
 ALC LINDA C04L
 SYDGEN C C & 7
 SYDGEN 4646 ALLY 8131

i50K Heifer bull - Top 3% CED, 3% BW, 3% SW



S A V HESSTON 2217

Reg. #:+17318946 BD: 03/01/12 Tattoo: 2217

EPDs	BW	WW	YW	Milk	Marb	RE	\$B
	+3.2	+65	+109	+29	+0.65	+0.49	+140.53

S A V HARVESTOR 0338
 S A V HERITAGE 6295
 S A V EMBLYNETTE 7749
 CAR DUKE 104
 S A V BLACKCAP MAY 4136
 S A V NET WORTH 4200
 SAV EMBLYNETTE DIAMOND 6377
 BON VIEW BANDO 598
 S A F ROYAL LASS 1002
S A V EMBLYNETTE 3301
 S A F 598 BANDO 5175
 S A V EMBLYNETTE 7319
 SAV EMBLYNETTE DIAMOND 5369

37 RBM HESSTON C421

Tag#: C421 Reg. #: +18356842 Tattoo: C421

BD: 02/10/15 BW: 89 WW/Ratio: 777/100 YW/Ratio: 1561/100

EPDs	BW	WW	YW	Milk	REA	Fat
	+2.7	+53	+90	+21	+0.28	+0.060

ULTRASOUND: %IMF/Ratio: 4.38/94 Ribeye/Ratio: 14.4/102 Jan. 13 Wt.: 1384

S A V HESSTON 2217
 S A V HARVESTOR 0338
 S A V EMBLYNETTE 3301
 RIVER HILLS RAKETEER R385
RBM RAKETEER A217
 616 OF R B M 534
 S A V HERITAGE 6295
 S A V EMBLYNETTE 7749
 S A F 598 BANDO 5175
 S A V EMBLYNETTE 7319
 BR MIDLAND
 BAR S EDELLA 3047
 W A F 616 RITO 32
 NEUTRON OF R B M X3 202

i50K Lots 37-39 are ET brothers. Here is an opportunity to use some different genetics. Three full brothers who are full of meat and muscle backed by a great cow. Turn these three full brothers out and image how uniform your feeder cattle will be. i50K results available March 1.



38 RBM HESSTON C418

Tag#: C418 Reg. #: +18356843 Tattoo: C418

BD: 02/14/15 BW: 92 WW/Ratio: 751/100 YW/Ratio: 1396/100

EPDs	BW	WW	YW	Milk	REA	Fat
	+2.7	+53	+90	+21	+0.36	+0.053

ULTRASOUND: %IMF/Ratio: 4.29/92 Ribeye/Ratio: 14.7/104 Jan. 13 Wt.: 1246

i50K Lots 37-39 are ET brothers. i50K results available March 1.

39 RBM HESSTON C419

Tag#: C419 Reg. #: +18356844 Tattoo: C419

BD: 02/14/15 BW: 94 WW/Ratio: 705/100 YW/Ratio: 1356/100

EPDs	BW	WW	YW	Milk	REA	Fat
	+2.7	+53	+90	+21	+0.49	+0.046

ULTRASOUND: %IMF/Ratio: 5.19/112 Ribeye/Ratio: 15.7/111 Jan. 13 Wt.: 1202

i50K Lots 37-39 are ET brothers. i50K results available March 1.



MUSGRAVE BIG SKY

Reg. #: 17614813 BD: 01/16/13 Tattoo: 1310

EPDs	BW	WW	YW	Milk	Marb	RE	\$B
	+1.7	+69	+124	+21	+1.05	+0.39	+140.68

CONNEALY EARNAN 076E
 CONNEALY CONSENSUS
 BRAZILA OF CONANGA 3991 839A
 S A F 598 BANDO 5175
 S A V PRIMROSE 8244

SAV PRIMROSE 7861
 KMK ALLIANCE 6595 187
 BLINDA OF CONANGA 004
 CONNEALY TOBIN
 BRESHA OF CONANGA 1251
 BON VIEW BANDO 598
 S A F ROYAL LASS 1002
 SITZ TRAVELER 9929
 S A V PRIMROSE STAR 1815

40 RBM BIG SKY C126

Tag#: T1093 Reg. #: +18360045 Tattoo: C126

BD: 02/14/15 BW: 97 WW/Ratio: 760/100 YW/Ratio: 1381/100

MUSGRAVE BIG SKY
 CONNEALY EARNAN 076E
 SAV PRIMROSE 7861

ALC BLACKBIRD I04U
 MYTTY IN FOCUS
 ALC BLACKBIRD 6707

CONNEALY CONSENSUS
 BRAZILA OF CONANGA 3991 839A
 S A F 598 BANDO 5175
 S A V PRIMROSE 8244
 S A F FOCUS OF E R
 MYTTY COUNTESS 906
 CONNEALY LEAD ON
 BALDRIDGE BLACKBIRD M868

EPDs	BW	WW	YW	Milk	REA	Fat
	+0.6	+57	+102	+28	+0.20	+0.026

ULTRASOUND: %IMF/Ratio: 5.18/100 Ribeye/Ratio: 15.4/101 Jan. 13 Wt.: 1304



Top 4% SW, 15% Marb - Big Sky is making a name for himself in producing easy calving cattle that grow and have performance. This bull is out of the I04U donor cow. As it turned out, this was the only bull in this mating; the rest were heifers... watch for more in the future.



RBM ROCKY Z220

[DDF]

Reg. #: +17419011 BD: 02/15/12 Tattoo: Z220

EPDs	BW	WW	YW	Milk	Marb	RE	\$B
	+6.4	+54	+98	+33	+0.60	+0.60	+113.09

VAR ROCKY 80029
 HARB ONWARD 786 J H
 VERMILION LASS 0029
 EXAR 263C

BASIN CHARISMA U691
 BASIN CHARISMA 4866

CONNEALY ONWARD
 H A R B JUANADA ERICA G75 JH
 CONNEALY DATELINE
 VERMILION LASS 8107
 BON VIEW NEW DESIGN 1407
 EXAR JUNE C 3577
 BASIN RAINMAKER 747L
 BASIN CHARISMA 1474

41 RBM ROCKY ZC02

Tag#: M922 Reg. #: +18336333 Tattoo: C02

BD: 12/23/14 BW: 97 WW/Ratio: 850/100 YW/Ratio: 1472/100

EPDs	BW	WW	YW	Milk	REA	Fat
	+0.3	+52	+96	+31	+0.71	+0.015

ULTRASOUND: %IMF/Ratio: 4.93/95 Ribeye/Ratio: 16.3/107 Jan. 13 Wt.: 1556

RBM ROCKY Z220
 VAR ROCKY 80029
 BASIN CHARISMA U691
 S A V FINAL ANSWER 0035

DERNER ANNIES 813 085
 DERNER ANNIES 610 813

HARB ONWARD 786 J H
 VERMILION LASS 0029
 EXAR 263C
 BASIN CHARISMA 4866
 SITZ TRAVELER 8180
 S A V EMULOUS 8145
 LCC NEW STANDARD
 DERNER ANNIES 48 610



Power and performance. This bull will sire a powerful set of feeder cattle. 16.3 REA - Maternal brother to lots 1-3.

42 RBM ROCKY C14

Tag#: V821 Reg. #: +18336329 Tattoo: C14

BD: 12/25/14 BW: 92 WW/Ratio: 634/100 YW/Ratio: 1349/100

EPDs	BW	WW	YW	Milk	REA	Fat
	+3.0	+44	+82	+36	+0.34	-0.007

ULTRASOUND: %IMF/Ratio: 5.52/106 Ribeye/Ratio: 15.5/102 Jan. 13 Wt.: 1444

RBM ROCKY Z220
 VAR ROCKY 80029
 BASIN CHARISMA U691
 MYTTY IN FOCUS

ALC BLACKBIRD I04U
 ALC BLACKBIRD 6707

HARB ONWARD 786 J H
 VERMILION LASS 0029
 EXAR 263C
 BASIN CHARISMA 4866
 S A F FOCUS OF E R
 MYTTY COUNTESS 906
 CONNEALY LEAD ON
 BALDRIDGE BLACKBIRD M868

iSOK Lots 42-44 are ET brothers. Three full brothers that are big and stout and will cover a lot of cows backed by the great I04U cow. Maternal brothers lots 4-9, 33-34, 40.

45 RBM ROCKY C129

Tag#: 1318 Reg. #: 18336302 Tattoo: C129

BD: 02/14/15 BW: 98 WW/Ratio: 672/94 YW/Ratio: 1301/97

EPDs	BW	WW	YW	Milk	REA	Fat
	+5.4	+52	+95	+23	+0.59	+0.029

ULTRASOUND: %IMF/Ratio: 4.77/96 Ribeye/Ratio: 16.0/109 Jan. 13 Wt.: 1240

RBM ROCKY Z220
 VAR ROCKY 80029
 BASIN CHARISMA U691
 TC TOTAL 410

RBM TOTAL 1318
 MISS NEUTRON R B M X3 582

HARB ONWARD 786 J H
 VERMILION LASS 0029
 EXAR 263C
 BASIN CHARISMA 4866
 BON VIEW NEW DESIGN 208
 TC ERICA EILEEN 2047
 H&K NEUTRON 377 X3
 MISS ERICA OF M B 4854

iSOK

47 RBM ROCKY C134

Tag#: W909 Reg. #: 18336291 Tattoo: C134

BD: 02/15/15 BW: 99 WW/Ratio: 701/98 YW/Ratio: 1319/98

EPDs	BW	WW	YW	Milk	REA	Fat
	+4.5	+48	+86	+30	+0.37	-0.031

ULTRASOUND: %IMF/Ratio: 4.96/100 Ribeye/Ratio: 14.0/95 Jan. 13 Wt.: 1248

RBM ROCKY Z220
 VAR ROCKY 80029
 BASIN CHARISMA U691
 RIVER HILLS RAKETEER R385

RBM RAKETEER 909
 RBM DIRECTION 666

HARB ONWARD 786 J H
 VERMILION LASS 0029
 EXAR 263C
 BASIN CHARISMA 4866
 BR MIDLAND
 BAR S EDELLA 3047
 WAR DIRECTION 4124 5321 1120
 NEUTRON X3 R B M 203

iSOK

43 RBM ROCKY C24

Tag#: V840 Reg. #: +18336335 Tattoo: C24

BD: 12/30/14 BW: 88 WW/Ratio: 789/100 YW/Ratio: 1448/100

EPDs	BW	WW	YW	Milk	REA	Fat
	+3.3	+45	+82	+35	+0.27	+0.006

ULTRASOUND: %IMF/Ratio: 8.15/157 Ribeye/Ratio: 14.7/97 Jan. 13 Wt.: 1518

iSOK Lots 42-44 are ET brothers.

44 RBM ROCKY C25

Tag#: M901 Reg. #: +18336322 Tattoo: C25

BD: 12/30/14 BW: 98 WW/Ratio: 776/100 YW/Ratio: 1368/100

EPDs	BW	WW	YW	Milk	REA	Fat
	+3.6	+50	+92	+36	+0.27	+0.018

ULTRASOUND: %IMF/Ratio: 6.06/117 Ribeye/Ratio: 15.4/110 Jan. 13 Wt.: 1428

iSOK Lots 42-44 are ET brothers.

46 RBM ROCKY C131

Tag#: 88M Reg. #: 18336317 Tattoo: C131

BD: 02/14/15 BW: 84 WW/Ratio: 670/94 YW/Ratio: 1334/100

EPDs	BW	WW	YW	Milk	REA	Fat
	+2.5	+45	+91	+25	+0.39	-0.009

ULTRASOUND: %IMF/Ratio: 6.30/127 Ribeye/Ratio: 14.8/101 Jan. 13 Wt.: 1256

RBM ROCKY Z220
 VAR ROCKY 80029
 BASIN CHARISMA U691
 CIRCLE A 216 LTD 9377

WOODHILL EVERGREEN 439-88M
 WOODHILL EVERGREEN 786-439

HARB ONWARD 786 J H
 VERMILION LASS 0029
 EXAR 263C
 BASIN CHARISMA 4866
 SVF GDAR 216 LTD
 WOODHILL EVERGREEN 58-736
 WOODHILL TRIPLE THREAT
 WOODHILL EVERGREEN 58-786

iSOK Dam is lot 95 - Ration 127 IMF - Maternal brother RBM 112 Evergreen 657, sold to Morris & Miller, IL and Fox, IA and CJ Angus, IA

48 RBM ROCKY C147

Tag#: FB234 Reg. #: 18336315 Tattoo: C147

BD: 02/18/15 BW: 98 WW/Ratio: 738/104 YW/Ratio: 1346/101

EPDs	BW	WW	YW	Milk	REA	Fat
	+2.9	+50	+91	+29	+0.31	-0.019

ULTRASOUND: %IMF/Ratio: 4.91/99 Ribeye/Ratio: 15.1/103 Jan. 13 Wt.: 1238

RBM ROCKY Z220
 VAR ROCKY 80029
 BASIN CHARISMA U691
 MILLERS YUKON K98

NEUTRON X3-162 RBM 234 FB
 ANDORA BLKCP BESSIE 7087

HARB ONWARD 786 J H
 VERMILION LASS 0029
 EXAR 263C
 BASIN CHARISMA 4866
 A&B YUKON 7150
 MISS EMPRESS H122 OF M A F
 TC STOCKMAN 365
 ANDORA BLKCP BESSIE 33

iSOK



49 RBM ROCKY C150

Tag#: H3738 Reg. #: 18336318 Tattoo: C150

BD: 02/18/15 BW: 99 WW/Ratio: 737/103 YW/Ratio: 1324/99

EPDs BW +2.8 WW +52 YW +95 Milk +26 REA +0.56 Fat -0.037

ULTRASOUND: %IMF/Ratio: 4.46/90 Ribeye/Ratio: 17.1/116 Jan. 13 Wt.: 1232

RBM ROCKY Z220 VAR ROCKY 80029
BASIN CHARISMA U691
GBS KOUPALS 402 9326
GBS KOUPALS 402 9326 3738
GBS MISS KOUPALS 402 3056

HARB ONWARD 786 J H
VERMILION LASS 0029
EXAR 263C
BASIN CHARISMA 4866
KOUPLS B&B PRECISION 402
G B S MISS LANDMARK 8428
KOUPLS B&B PRECISION 402
G B S UNIVERSE 9453

50 RBM ROCKY C166

Tag#: X121 Reg. #: 18336296 Tattoo: C166

BD: 02/22/15 BW: 95 WW/Ratio: 669/94 YW/Ratio: 1258/94

EPDs BW +3.6 WW +46 YW +95 Milk +31 REA +0.41 Fat +0.024

ULTRASOUND: %IMF/Ratio: 4.91/99 Ribeye/Ratio: 13.3/90 Jan. 13 Wt.: 1170

RBM ROCKY Z220 VAR ROCKY 80029
BASIN CHARISMA U691
SITZ UPWARD 307R
RBM PRIDE X121 RBM YUKON 977

HARB ONWARD 786 J H
VERMILION LASS 0029
EXAR 263C
BASIN CHARISMA 4866
CONNELY ONWARD
SITZ HENRIETTA PRIDE 81M
MILLERS YUKON K98
DS MISS PRIDE 2913



VAR Rocky 80029 - Sire of RBM Rocky Z232

RBM ROCKY Z232

Reg. #: +17420858 BD: 02/14/12 Tattoo: Z232

EPDs BW +2.5 WW +57 YW +108 Milk +36 Marb +0.70 RE +0.50 \$B +117.21

VAR ROCKY 80029 HARB ONWARD 786 J H
VERMILION LASS 0029
CONNELY ONWARD
H A R B JUANADA ERICA G75 JH
CONNELY DATELINE
VERMILION LASS 8107
BON VIEW NEW DESIGN 1407
EXAR JUNE C 3577

BASIN CHARISMA U691 BASIN CHARISMA 4866
BASIN RAINMAKER 747L
BASIN CHARISMA 1474

51 RBM ROCKY Z232 C420

Tag#: C420 Reg. #: +18356848 Tattoo: C420

BD: 01/22/15 BW: 78 WW/Ratio: 682/100 YW/Ratio: 1277/100

EPDs BW +1.6 WW +52 YW +97 Milk +30 REA +0 Fat +0.012

ULTRASOUND: %IMF/Ratio: 5.13/111 Ribeye/Ratio: 12.3/87 Jan. 13 Wt.: 1184

RBM ROCKY Z232 VAR ROCKY 80029
BASIN CHARISMA U691
WOODHILL ADMIRAL 77K
RIVER HILLS BLOSSOM R643
RIVER HILLS BLOSUM 4284

HARB ONWARD 786 J H
VERMILION LASS 0029
EXAR 263C
BASIN CHARISMA 4866
S A F FOCUS OF E R
WOODHILL LASS 344-1178
SITZ ALLIANCE 6595
S V F BLACKBIRD BLOSSOM 95J



Lots 51-53 are ET brothers. Sired by RBM Rocky Z232 who was purchased by Sol-saa Angus in 2013. If you want added depth of body and muscle to your calf crop, these three bulls are for you. i50K results available March 1.



RIVER HILLS BLOSSOM R643
Donor Dam of Lots 51-53

52 RBM ROCKY Z232 C422

Tag#: C422 Reg. #: +18358969 Tattoo: C422

BD: 02/11/15 BW: 83 WW/Ratio: 728/100 YW/Ratio: 1354/100

EPDs BW +1.6 WW +52 YW +97 Milk +30 REA +0.12 Fat +0.007

ULTRASOUND: %IMF/Ratio: 3.79/82 Ribeye/Ratio: 14.2/101 Jan. 13 Wt.: 1216

Lots 51-53 are ET brothers. i50K results available March 1.



53 RBM ROCKY Z232 C423

Tag#: C423 Reg. #: +18358970 Tattoo: C423

BD: 02/14/15 BW: 92 WW/Ratio: 743/100 YW/Ratio: 1410/100

EPDs BW +1.6 WW +52 YW +97 Milk +30 REA +0.04 Fat +0.007

ULTRASOUND: %IMF/Ratio: 5.04/109 Ribeye/Ratio: 13.4/95 Jan. 13 Wt.: 1254

Lots 51-53 are ET brothers. i50K results available March 1.





RBM CC7 Y40

Reg. #: 16984247	BD: 01/11/11	Tattoo: Y40					
EPDs	BW	WW	YW	Milk	Marb	RE	\$B
	-3.8	+39	+82	+38	+0.91	-0.03	+109.22
SYDGEN C C & 7	S A F CONNECTION			SVF GDAR 216 LTD			
	SYDGEN FOREVER LADY 4087			S A F ROYAL QUEEN 5084			
	MYTTY IN FOCUS			SYDGEN 1407 CORONA 2016			
ALC BLACKBIRD I04U	ALC BLACKBIRD 6707			S A F FOREVER LADY 8292			
				S A F FOCUS OF E R			
				MYTTY COUNTESS 906			
				CONNEALY LEAD ON			
				BALDRIDGE BLACKBIRD M868			

54 RBM Y40 C34

Tag#: A41 Reg. #: 18336321 Tattoo: C34

BD: 01/03/15 BW: 80 WW/Ratio: 776/111 YW/Ratio: 1421/109

EPDs	BW	WW	YW	Milk	REA	Fat
	-1.7	+57	+106	+38	+0.30	+0.021

ULTRASOUND: %IMF/Ratio: 5.77/114 Ribeye/Ratio: 15.6/106 Jan. 13 Wt.: 1428

RBM CC7 Y40	SYDGEN C C & 7	S A F CONNECTION
	ALC BLACKBIRD I04U	SYDGEN FOREVER LADY 4087
		MYTTY IN FOCUS
RBM CLARA A41	TLC COWBOY UP 7211	ALC BLACKBIRD 6707
	RBM CLARA Y117	SITZ UPWARD 307R
		JAR ANNIE 5129 976
		SYDGEN C C & 7
		G G CLARA 859



Heifer bull. Calving ease all through this pedigree - CC&7, I04U, Mytt, Upward, Clara 859 - generations of predictable calving built into this bull who also excelled at weaning, yearling and carcass. Top 3% CED, 4% BW, 3% SW, 15% SF, 20% SB, 15% QG, 20% CW, 20% MB



55 RBM Y40 C44

Tag#: A96 Reg. #: 18336306 Tattoo: C44

BD: 01/07/15 BW: 74 WW/Ratio: 721/103 YW/Ratio: 1286/99

EPDs	BW	WW	YW	Milk	REA	Fat
	-0.8	+45	+88	+33	+0.20	+0.018

ULTRASOUND: %IMF/Ratio: 6.19/122 Ribeye/Ratio: 13.0/88 Jan. 13 Wt.: 1270

RBM CC7 Y40	SYDGEN C C & 7	S A F CONNECTION
	ALC BLACKBIRD I04U	SYDGEN FOREVER LADY 4087
		MYTTY IN FOCUS
RBM TRENDY ERICA A96	TLC COWBOY UP 7211	ALC BLACKBIRD 6707
	RBM TRENDY ERICA Y114	SITZ UPWARD 307R
		JAR ANNIE 5129 976
		SITZ UPWARD 307R
		RBM DIRECTION 1326



Heifer bull - Top 10% BW, 10% QG, 10% Marb, 20% SG

57 RBM Y40 C63

Tag#: A58 Reg. #: 18336336 Tattoo: C63

BD: 01/11/15 BW: 77 WW/Ratio: 795/113 YW/Ratio: 1464/112

EPDs	BW	WW	YW	Milk	REA	Fat
	-2.0	+56	+106	+34	+0.17	-0.067

ULTRASOUND: %IMF/Ratio: 6.48/128 Ribeye/Ratio: 15.3/104 Jan. 13 Wt.: 1450

RBM CC7 Y40	SYDGEN C C & 7	S A F CONNECTION
	ALC BLACKBIRD I04U	SYDGEN FOREVER LADY 4087
		MYTTY IN FOCUS
	FLAG IMPRESSION 10127	ALC BLACKBIRD 6707
RBM ANN A58	RBM RAKETEER 669	CONNEALY IMPRESSION
		CHAMPION HILL BLOSSOM 5987
		RIVER HILLS RAKETEER R385
		RBM ALLIANCE 237



Heifer bull - Top 3% CED, 3% BW, 15% YW, 10% Marb, 10% SW, 10% SF, 10% SG, 10% QG, 10% SB, 1% Milk

56 RBM Y40 C48

Tag#: A17 Reg. #: 18336303 Tattoo: C48

BD: 01/08/15 BW: 60 WW/Ratio: 722/103 YW/Ratio: 1324/103

EPDs	BW	WW	YW	Milk	REA	Fat
	-3.8	+43	+86	+37	-0.11	-0.007

ULTRASOUND: %IMF/Ratio: 6.44/127 Ribeye/Ratio: 14.2/97 Jan. 13 Wt.: 1310

RBM CC7 Y40	SYDGEN C C & 7	S A F CONNECTION
	ALC BLACKBIRD I04U	SYDGEN FOREVER LADY 4087
		MYTTY IN FOCUS
RBM EVERGREEN A17	WK BOBCAT	ALC BLACKBIRD 6707
	WOODHILL EVERGREEN 194K-77M	CONNEALY RIGHT ANSWER 746
		WK MISS ANGUS 7127
		BON VIEW NEW DESIGN 878
		WOODHILL EVERGREEN 1188-194K



Heifer bull - Top 1% CED, 1% BW, 15% Marb, 15% QG

58 RBM Y40 C70

Tag#: A139 Reg. #: 18336295 Tattoo: C70

BD: 01/14/15 BW: 81 WW/Ratio: 664/95 YW/Ratio: 1280/98

EPDs	BW	WW	YW	Milk	REA	Fat
	-0.9	+38	+81	+30	-0.10	-0.002

ULTRASOUND: %IMF/Ratio: 4.92/97 Ribeye/Ratio: 13.1/89 Jan. 13 Wt.: 1266

RBM CC7 Y40	SYDGEN C C & 7	S A F CONNECTION
	ALC BLACKBIRD I04U	SYDGEN FOREVER LADY 4087
		MYTTY IN FOCUS
RBM SKY BAND A139	J&J IRON MOUNTAIN 437	ALC BLACKBIRD 6707
	RBM SKY BAND X058	S A V IRON MOUNTAIN 8066
		J&J DAKOTA STAR 437
		SITZ UPWARD 307R
		RBM RITO 4L6



Heifer bull - Top 3% CED, 10% BW, 10% Milk



Connealy Final Solution
Sire of RBM Final Solution A28

RBM FINAL SOLUTION A28

Reg. #: 17710589 BD: 01/22/13 Tattoo: A28

EPDs	BW	WW	YW	Milk	Marb	RE	\$B
	+2.3	+57	+97	+27	+0.33	+0.63	+136.04

CONNEALY FINAL SOLUTION
ESTE OF CONANGA 364
WAR ALLIANCE 9126 6006
RBM ANN BASIN X168
H FAME R B M 383

CONNEALY ANSWER 71
S A V FINAL ANSWER 0035
EURO REEKA OF CONANGA 3539
CONNEALY DANNY BOY
ESTHERA OF CONANGA 842
SITZ ALLIANCE 6595
WAR BANDO 6006 598 4053
WAR HALL OF FAME 8023
MISS 9440 OF R B M 451

59 RBM FINAL SOLUTION C160

Tag#: Y19 Reg. #: 18336294 Tattoo: C160

BD: 02/20/15 BW: 95 WW/Ratio: 685/96 YW/Ratio: 1392/104

EPDs	BW	WW	YW	Milk	REA	Fat
	+2.3	+53	+97	+25	+0.47	+0.004

ULTRASOUND: %IMF/Ratio: 5.82/117 Ribeye/Ratio: 14.5/99 Jan. 13 Wt.: 1306

RBM FINAL SOLUTION A28
RBM ANN BASIN X168

RBM ANGUS LADY Y19
SYDGEN C C & 7
GBS MISS FINAL ANSWER 3768

CONNEALY ANSWER 71
ESTE OF CONANGA 364
WAR ALLIANCE 9126 6006
H FAME R B M 383
S A F CONNECTION
SYDGEN FOREVER LADY 4087
S A V FINAL ANSWER 0035
GBS MISS KOUPALS 402 2546

ISOK Dam is lot 88. A bull that has length of body and muscle.

60 RBM TOTAL IMPACT C93

Tag#: A56 Reg. #: 18336311 Tattoo: C93

BD: 01/24/15 BW: 60 WW/Ratio: 663/94 YW/Ratio: 1239/95

EPDs	BW	WW	YW	Milk	REA	Fat
	-1.4	+43	+83	+20	+0.27	+0.012

ULTRASOUND: %IMF/Ratio: 5.69/112 Ribeye/Ratio: 14.7/100 Jan. 13 Wt.: 1188

RBM TOTAL IMPACT A316
ALC BLACKBIRD I04U

RBM BLOSSOM A56
TC TOUCHDOWN 772
RIVER HILLS BLOSSOM R643

TC TOTAL 410
POSS BLACKCAP 5116
MYTTY IN FOCUS
ALC BLACKBIRD 6707
TC GRIDIRON 258
TC MARCIA 1069
WOODHILL ADMIRAL 77K
RIVER HILLS BLOSSOM 4284

ISOK Heifer bull - Top 5% CED, 5% BW

R5 RAMBO 1531 [DDF]

Reg. #: 17406497 BD: 08/18/11 Tattoo: 1531

EPDs	BW	WW	YW	Milk	Marb	RE	\$B
	+1.3	+68	+118	+18	+0.20	+0.43	+130.29

R5 RAMBO 753
NORTHFORK FAME 1705
SCR SUPERIOR 210M-50203
SCR MISS ESSO 70650
SCR MISS ESSO 50643

S S TRAVELER 6807 T510
S S MISS RITA R011 7R8
S A F FAME OF NORTHFORK 231
NORTHFORK DIVERSITY 531
F A R SUPERIOR 210M
S A V ERICA 0067
CONNEALY RIGHT DIRECTION3499
SCR MISS ESSO

ISOK

RBM TOTAL IMPACT A316

Reg. #: 17710471 BD: 02/08/13 Tattoo: A316

EPDs	BW	WW	YW	Milk	Marb	RE	\$B
	+1.7	+37	+80	+22	+0.97	+0.32	+117.34

POSS TOTAL IMPACT 745
ALC BLACKBIRD I04U

TC TOTAL 410
TC ERICA EILEEN 2047
CONNEALY LEAD ON
POSS BLACKCAP 205
S A F FOCUS OF E R
MYTTY COUNTLESS 906
CONNEALY LEAD ON
BALDRIDGE BLACKBIRD M868

POSS BLACKCAP 5116
MYTTY IN FOCUS
ALC BLACKBIRD 6707



Poss Total Impact 745
Sire of RBM Total Impact A316

61 RBM RAMBO C154

Tag#: A16 Reg. #: 18336301 Tattoo: C154

BD: 02/19/15 BW: 95 WW/Ratio: 738/105 YW/Ratio: 1365/105

EPDs	BW	WW	YW	Milk	REA	Fat
	+3.0	+55	+106	+24	+0.25	-0.028

ULTRASOUND: %IMF/Ratio: 7.08/140 Ribeye/Ratio: 17.3/118 Jan. 13 Wt.: 1240

R5 RAMBO 1531
R5 RAMBO 753
SCR MISS ESSO 70650
WK BOBCAT
ALC BLACKBIRD I04U

S S OBJECTIVE T510 OT26
NORTHFORK FAME 1705
SCR SUPERIOR 210M-50203
SCR MISS ESSO 50643
CONNEALY RIGHT ANSWER 746
WK MISS ANGUS 7127
MYTTY IN FOCUS
ALC BLACKBIRD 6707

ISOK Top 15% SF - A bull that is sired by a big topped, long bodied beef bull.



TR MR WRANGLER NFR 3526A

Reg. #: M833166	BD: 03/11/13	Tattoo: 3526					
EPDs	BW 3.5	WW 55	YW 77	Milk 12	Marb -0.09	RE 0.63	Fat 0.003
WR WRANGLER W601	CMF 192 WRANGLER 256	WR MISS PRINCESS T629	BALDRIDGE FASTTRACK 82F				
HF MUSTANG SALLY 904 PLD	TR MR FIRE WATER 5792RET	WELLS-JBJ PLATINUMLADY336	CMF 138 OF D040 192				
			OAKDALE DUKE 9003P				
			WR EASE 4412				
			THOMAS OAH WIND 0772ET P				
			THOMASSWISSERSWEET1764ET				
			GDSF JR PLATINUM 20K				
			JBJ BLIZZETTE 724				

62 RBM WRANGLER NFR C16

Tag#: 933 Reg. #: EM868816 Tattoo: C16

BD: 12/27/14 BW: 94 WW/Ratio: 648/97 YW/Ratio: 1259/100

EPDs	BW 1.3	WW 39	YW 64	Milk 12	REA 0.50	Fat 0.006
-------------	--------	-------	-------	---------	----------	-----------

ULTRASOUND: %IMF/Ratio: 3.56/93 Ribeye/Ratio: 17.04/106 Jan. 13 Wt.: 1332

TR MR WRANGLER NFR 3526A
 HF MUSTANG SALLY 904 PLD
 CMF 192 WRANGLER 256
 WR MISS PRINCESS T629
 TR MR FIRE WATER 5792RET
 WELLS-JBJ PLATINUMLADY336
HC RHINESTONE 5100
 LT EASY PRO 1158 PLD
 HC JACK 2082
 LT UNLIMITED EASE 9108
 LT LADY MACBETH 8413 ETP
 JDJ JACK J258
 HC CADILLAC 8081

Lots 62-64 are ET brothers. This is a mating that we were very excited about from day one, and it did not disappoint. 5100 has a way of making good cattle better, and it happened here again. Deep, thick, long bodied with muscle shape backed by some of the breed leaders for maternal traits.



63 RBM WRANGLER NFR C22

Tag#: 1000 Reg. #: EM868821 Tattoo: C22

BD: 12/29/14 BW: 103 WW/Ratio: 751/113 YW/Ratio: 1391/110

EPDs	BW 2.5	WW 49	YW 78	Milk 12	REA 0.50	Fat 0.006
-------------	--------	-------	-------	---------	----------	-----------

ULTRASOUND: %IMF/Ratio: 3.24/85 Ribeye/Ratio: 16.66/104 Jan. 13 Wt.: 1460

Lots 62-64 are ET brothers. If you like big, stout, performance cattle, this is your bull. His offspring will be scale crushers.



HF MUSTANG SALLY 904 PLD
 Dam of TR Mr Wrangler NFR 3526A



HC RHINESTONE 5100
 Donor Dam of Lots 62-64 & 67-69

64 RBM WRANGLER NFR C33

Tag#: 945 Reg. #: EM868820 Tattoo: C33

BD: 01/03/15 BW: 99 WW/Ratio: 693/104 YW/Ratio: 1335/106

EPDs	BW 1.7	WW 44	YW 72	Milk 12	REA 0.50	Fat 0.006
-------------	--------	-------	-------	---------	----------	-----------

ULTRASOUND: %IMF/Ratio: 3.99/104 Ribeye/Ratio: 17.43/109 Jan. 13 Wt.: 1392

Lots 62-64 are ET brothers. It might be hard to poke a hole in this bull. He is so complete in type. Look at his numbers; he has a ratio above all categories. A real beef bull.



LT LONG DISTANCE 9001 PLD

Reg. #: M780143 BD: 02/09/09 Tattoo: 9001

EPDs	BW	WW	YW	Milk	Marb	RE	Fat
	-2.7	20	31	21	0.23	-0.15	0.003

LT SILVER YIELD 3196 P
LT SILVER DISTANCE 5342P
 LT MATTIE 9026 POLLED

LT EASY PRO 1158 PLD
LT BELLE 7026 P
 LT BELLE 5110 PLD

SS MONTANA SILVER
 LT CAROL 8131 PLD
 BBCR SIR MAC 112 P/S
 LT UNLTD WILLOW 7090 PLD
 LT UNLIMITED EASE 9108
 LT LADY MACBETH 8413 ET P
 LT UNLIMITED EASE 9108
 LT BELLE 3076 PLD

65 RBM LONG DISTANCE C73

Tag#: A15 Reg. #: M868819 Tattoo: C73

BD: 01/14/15 BW: 86 WW/Ratio: 728/100 YW/Ratio: 1330/100

EPDs	BW	WW	YW	Milk	REA	Fat
	-2.4	24	37	14	0.11	0.008

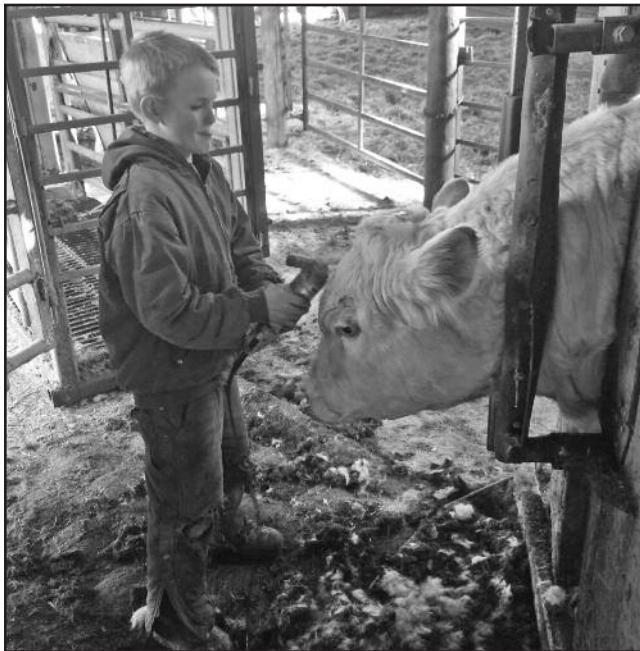
ULTRASOUND: %IMF/Ratio: 2.98/100 Ribeye/Ratio: 15.19/100 Jan. 13 Wt.: 1272

LT SILVER DISTANCE 5342P
LT LONG DISTANCE 9001 PLD
 LT BELLE 7026 P

WR WRANGLER W601
RBM RHINESTONE A15
 RBM CIGAR RHINESTONE Y177

LT SILVER YIELD 3196 P
 LT MATTIE 9026 POLLED
 LT EASY PRO 1158 PLD
 LT BELLE 5110 PLD
 CMF 192 WRANGLER 256
 WR MISS PRINCESS T629
 TR MR CIGAR 6586S
 HC RHINESTONE 5100

Long Distance needs no introduction as a calving ease sire. Look at this pedigree – Long Distance/Wrangler/5100 – all maternal and calving ease. Out of a first calf heifer.



66 RBM LONG DISTANCE C125

Tag#: A68 Reg. #: M868817 Tattoo: C125

BD: 02/13/15 BW: 86 WW/Ratio: 728/100 YW/Ratio: 1330/100

EPDs	BW	WW	YW	Milk	REA	Fat
	-2.4	24	37	14	0.11	0.008

ULTRASOUND: %IMF/Ratio: 4.09/109 Ribeye/Ratio: 15.51/105 Jan. 13 Wt.: 1272

LT SILVER DISTANCE 5342P
LT LONG DISTANCE 9001 PLD
 LT BELLE 7026 P

WCR SIR DUKE 7265 P
RBM LADY A68
 RBM BLUE LADY 349

LT SILVER YIELD 3196 P
 LT MATTIE 9026 POLLED
 LT EASY PRO 1158 PLD
 LT BELLE 5110 PLD
 WCR SIR DUKE 17J ET P
 WCR MS PAUL 448 P
 LT BLUEGRASS 4017 P
 RBMHC LADY L06 707

Calving ease predictability with carcass numbers. Look close here. Out of a first calf heifer.

**BRING YOUR TRAILER AND RECEIVE A CRISP \$100 BILL
 FOR TAKING YOUR BULL HOME SALE DAY!!!**



RAILE 2250 T077

Reg. #: M749278 BD: 03/02/07 Tattoo: T077

EPDs	BW	WW	YW	Milk	Marb	RE	Fat
	1.4	40	77	7	0.21	0.85	0.005

JWK IMPRESSIVE D040 ET
FINKS 2250 OF 3575D040ET
 WCR MISS TRADITION 3575

RC FRANCESCA 0251
 RC FRANCESCA 9855

WCR SIR FA MAC 2244
 HBR LADY LIZ 721 P
 WCR SIR TRADITION 066
 WCR MISS DUKE 9026
 SCR CHARLIE 5702
 SC SUPER LADY 6744 PLD
 RC BOW DUKE 458A
 RC FRANCESCA 410

67 RBM RALIE T077 C89

Tag#: V826 Reg. #: EM868822 Tattoo: C89

BD: 02/20/15 BW: 93 WW/Ratio: 668/100 YW/Ratio: 1254/99

EPDs	BW	WW	YW	Milk	REA	Fat
	0.4	34	64	9	0.61	0.007

ULTRASOUND: %IMF/Ratio: 3.71/97 Ribeye/Ratio: 15.37/96 Jan. 13 Wt.: 1260

RAILE 2250 T077
 FINKS 2250 OF 3575D040ET
 RC FRANCESCA 0251

HC RHINESTONE 5100
 LT EASY PRO 1158 PLD
 HC JACK 2082

JWK IMPRESSIVE D040 ET
 WCR MISS TRADITION 3575
 SCRSUPERCHARLIE0767PD
 RC FRANCESCA 9855
 LT UNLIMITED EASE 9108
 LT LADY MACBETH 8413 ETP
 JDJ JACK J258
 HC CADILLAC 8081

Lots 67-68 are ET brothers. Two full brothers that their flush brother sold for \$9,500 in 2015 to LT Ranch.



68 RBM RALIE T077 C91

Tag#: 1080G Reg. #: EM868818 Tattoo: C91

BD: 02/21/15 BW: 93 WW/Ratio: 575/86 YW/Ratio: 1066/85

EPDs	BW	WW	YW	Milk	REA	Fat
	0.4	24	45	9	0.61	0.007

ULTRASOUND: %IMF/Ratio: 4.63/121 Ribeye/Ratio: 13.70/85 Jan. 13 Wt.: 1068

Lots 67-68 are ET brothers.

EC GAME CHANGER 5030 PLD

Reg. #: M803413 BD: 03/12/11 Tattoo: 5030

EPDs	BW	WW	YW	Milk	Marb	RE	Fat
	3.6	60	109	-4	-0.15	1.08	-0.019

KEYS MCTENDER 279P
KEYS TEN-ACIOUS 1665
 MISS KEY MAYBELL 73N

M6 GRID MAKER 104 PET
EC GRETCHEN 5030 P
 EC CHAMOMILE PLD 718G

KEYS MCHENRY 24M
 KEYS ABE 70C
 KEYS HANDYMAN PLD 255H
 LTC MAYBELL 539 PLD
 WCR SIR TRADITION 066
 VCR MISS MAC IV 317
 ASC ELIMINATOR 032
 HJL CAMILLA 515

69 RBM GAME CHANGER C113

Tag#: 5100 Reg. #: M868823 Tattoo: C113

BD: 02/08/15 BW: 00 WW/Ratio: 914/128 YW/Ratio: 1362/103

EPDs	BW	WW	YW	Milk	REA	Fat
	1.8	55	91	4	0.73	-0.005

ULTRASOUND: %IMF/Ratio: 3.44/91 Ribeye/Ratio: 14.14/95 Jan. 13 Wt.: 1244

EC GAME CHANGER 5030 PLD
 KEYS TEN-ACIOUS 1665
 EC GRETCHEN 5030 P

HC RHINESTONE 5100
 LT EASY PRO 1158 PLD
 HC JACK 2082

KEYS MCTENDER 279P
 MISS KEY MAYBELL 73N
 M6 GRID MAKER 104 PET
 EC CHAMOMILE PLD 718G
 LT UNLIMITED EASE 9108
 LT LADY MACBETH 8413 ETP
 JDJ JACK J258
 HC CADILLAC 8081

5100's natural calf. She has a way of making the kind that will perform and stand the test of time.



Registered Yearling Angus Heifers

Females

70 RBM CLARA C39

Tag#: Y313 Reg. #: 18355581 Tattoo: C39

BD: 01/07/15	BW: 58	WW/Ratio: 594/91
--------------	--------	------------------

EPDs	BW	WW	YW	Milk	REA	Fat
	-4.3	+49	+100	+29	+0.30	-0.012

SYDGEN 928 DESTINATION 5420 B/R DESTINATION 727-928
PRAIRIE PRIDE NEXT STEP 2036 SHADY BROOK ENTENSE 76D 29H
 FLYING V MISS PRIDE 426 BOYD NEW DAY 8005
 SYDGEN C C & 7 S A F CONNECTION
RBM CLARA Y313 SYDGEN FOREVER LADY 4087
 G G CLARA 859 J R JUICE 2005
 G G CLARA 200

Top 1% CED, 1% BW, 20% YW - Next Step daughter with amazing calving ease with growth numbers. The best way to describe this heifer is unique, long necked, long bodied. This may be a mistake in selling - take advantage of this opportunity. ¾ sister to Lot 72.

72 RBM POLLY C84

Tag#: Y316 Reg. #: 18355593 Tattoo: C84

BD: 01/17/15	BW: 76	WW/Ratio: 594/91
--------------	--------	------------------

EPDs	BW	WW	YW	Milk	REA	Fat
	-0.9	+50	+106	+31	+0.39	-0.031

SYDGEN 928 DESTINATION 5420 B/R DESTINATION 727-928
PRAIRIE PRIDE NEXT STEP 2036 SHADY BROOK ENTENSE 76D 29H
 FLYING V MISS PRIDE 426 BOYD NEW DAY 8005
 SYDGEN C C & 7 S A F CONNECTION
RBM CC7 Y316 SYDGEN FOREVER LADY 4087
 T K POLLY P160 S A F STRATEGY 9015
 T K POLLY 229

Top 10% CED, 10% BW, 10% YW, 5% SF, 15% SB - ¾ sister to Lot 70. Maternal grand dam is 859 who is the dam of Genetics by Design 049 - cow power here.

74 RBM ANN BASIN C137

Tag#: X168 Reg. #: 18355610 Tattoo: C137

BD: 02/16/15	BW: 85	WW/Ratio: 585/90
--------------	--------	------------------

EPDs	BW	WW	YW	Milk	REA	Fat
	+3.8	+47	+90	+26	+0.46	-0.028

VAR ROCKY 80029 HARB ONWARD 786 J H
RBM ROCKY Z220 VERMILION LASS 0029
 BASIN CHARISMA U691 EXAR 263C
 BASIN CHARISMA 4866
 WAR ALLIANCE 9126 6006 SITZ ALLIANCE 6595
RBM ANN BASIN X168 WAR BANDO 6006 598 4053
 H FAME R B M 383 WAR HALL OF FAME 8023
 MISS 9440 OF R B M 451

Maternal brother sold to Larsen in 2015 for \$5,000 and a son sold to Grazing Acres in 2014. Dam of Lot 59.

76 RBM BLOSSOM C66

Tag#: A61 Reg. #: 18355586 Tattoo: C66

BD: 01/12/15	BW: 73	WW/Ratio: 610/95
--------------	--------	------------------

EPDs	BW	WW	YW	Milk	REA	Fat
	-0.6	+45	+87	+29	+0.09	-0.003

SYDGEN C C & 7 S A F CONNECTION
RBM CC7 Y40 SYDGEN FOREVER LADY 4087
 ALC BLACKBIRD I04U MYTTY IN FOCUS
 TC TOUCHDOWN 772 ALC BLACKBIRD 6707
 RIVER HILLS BLOSSOM R643 TC GRIDIRON 258
 TC MARCIA 1069
 WOODHILL ADMIRAL 77K
 RIVER HILLS BLOSUM 4284

Top 10% CED, 15% BW, 15% QG - Out of a 1st calf heifer.

71 RBM PEGGY C78

Tag#: Y81 Reg. #: 18355590 Tattoo: C78

BD: 01/15/15	BW: 72	WW/Ratio: 700/107
--------------	--------	-------------------

EPDs	BW	WW	YW	Milk	REA	Fat
	-0.8	+62	+121	+32	+0.47	+0.011

SYDGEN 928 DESTINATION 5420 B/R DESTINATION 727-928
PRAIRIE PRIDE NEXT STEP 2036 SHADY BROOK ENTENSE 76D 29H
 FLYING V MISS PRIDE 426 BOYD NEW DAY 8005
 SITZ UPWARD 307R CONNEALY ONWARD
RBM PEGGY Y81 SITZ HENRIETTA PRIDE 81M
 RBM DUKE 49
 1407C OF R B M 614

Top 10% CED, 10% BW, 10% WW, 1% YW, 1% SF, 10% SB, 10% SW - Here is the program. This heifer should be staying here and getting bred, but she is here to sell. Breed her and get ready to have a great cow. Look at her pedigree... Upward, Dulce, Next Step... It's all good.

73 RBM VENTURE LADY C109

Tag#: X140 Reg. #: 18355597 Tattoo: C109

BD: 02/05/15	BW: 93	WW/Ratio: 704/108
--------------	--------	-------------------

EPDs	BW	WW	YW	Milk	REA	Fat
	+3.7	+54	+97	+29	+0.27	-0.019

VAR ROCKY 80029 HARB ONWARD 786 J H
RBM ROCKY Z220 VERMILION LASS 0029
 BASIN CHARISMA U691 EXAR 263C
 BASIN CHARISMA 4866
 WAR ALLIANCE 9126 6006 SITZ ALLIANCE 6595
RBM VENTURE LADY WAR BANDO 6006 598 4053
 E A VENTURE 118 V F VENTURE FORWARD
 E A EXT 58

Look through this pedigree. U691 is the dam of Lot 22. Venture 118 is a very maternal cow family.

75 RBM EXT BAND C138

Tag#: X149 Reg. #: 18355611 Tattoo: C138

BD: 02/16/15	BW: 75	WW/Ratio: 575/88
--------------	--------	------------------

EPDs	BW	WW	YW	Milk	REA	Fat
	+3.3	+44	+88	+32	+0.44	-0.018

VAR ROCKY 80029 HARB ONWARD 786 J H
RBM ROCKY Z220 VERMILION LASS 0029
 BASIN CHARISMA U691 EXAR 263C
 BASIN CHARISMA 4866
 WAR ALLIANCE 9126 6006 SITZ ALLIANCE 6595
RBM EXT BAND X149 WAR BANDO 6006 598 4053
 SYDGEN EXT 8082 SYDGEN TRIUMPH
 PAWS UP EXT 2023

Top 15% SB - Dam's production - WW 4 @ 103, YW 2 @ 112, IMF 2 @ 107, REA 2 @ 104 - Brother sold in 2015 to Kasuske and 2014 to Seehafer.

77 RBM SKYMERE C165

Tag#: H9948 Reg. #: 18355621 Tattoo: C165

BD: 02/22/15	BW: 74	WW/Ratio: 614/94
--------------	--------	------------------

EPDs	BW	WW	YW	Milk	REA	Fat
	+0.7	+52	+87	+21	+0.37	-0.009

CONNEALY FINAL SOLUTION CONNEALY ANSWER 71
RBM FINAL SOLUTION A28 ESTE OF CONANGA 364
 RBM ANN BASIN X168 WAR ALLIANCE 9126 6006
 H FAME R B M 383
 GBS KROUPALS 402 3136 KROUPALS B&B PRECISION 402
GBS MISS KROUPALS 3136 9948 G B S LADY UNIVERSE 3313
 G B S SKYMERE LADY 7940 V D A R TRAVELER 275
 MISS G B S AMIGO 8784

Sister sold in 2012 to Emily Creek Ranch. Brother sold in 2013 to Baier and 2014 to Schultz.

78 RBM BLOSSOM C120

Tag#: A86 Reg. #: 18355603 Tattoo: C120

BD: 02/13/15 BW: 70 WW/Ratio: 557/87

EPDs	BW	WW	YW	Milk	REA	Fat
	+0.9	+41	+82	+20	+0.25	+0.002

RBM TOTAL IMPACT A316
POSS TOTAL IMPACT 745
ALC BLACKBIRD I04U

RBM BLOSSOM A86
TC TOUCHDOWN 772
RIVER HILLS BLOSSOM R643

TC TOTAL 410
POSS BLACKCAP 5116
MYTTY IN FOCUS
ALC BLACKBIRD 6707
TC GRIDIRON 258
TC MARCIA 1069
WOODHILL ADMIRAL 77K
RIVER HILLS BLOSSOM 4284

Out of a first calf heifer. Grand dam R643 is the dam of Lots 51-53. Sire sold in 2014 to Thompson.

80 RBM JILT C176

Tag#: A108 Reg. #: 18355625 Tattoo: C176

BD: 03/01/15 BW: 80 WW/Ratio: 664/103

EPDs	BW	WW	YW	Milk	REA	Fat
	+2.7	+44	+81	+25	+0.32	-0.008

RBM TOTAL IMPACT A316
POSS TOTAL IMPACT 745
ALC BLACKBIRD I04U

RBM JILT A108
H&K CC&7 H198
RBM DIRECTION 1528

TC TOTAL 410
POSS BLACKCAP 5116
MYTTY IN FOCUS
ALC BLACKBIRD 6707
SYDGEN C C & 7
BLACKCAP EMPRESS ELLSTON T15
WAR DIRECTION 4124 5321 1120
LAKE VIEW JILT 253

Out of a first calf heifer.

79 RBM PRINCESS C148

Tag#: A48 Reg. #: 18355614 Tattoo: C148

BD: 02/18/15 BW: 67 WW/Ratio: 566/88

EPDs	BW	WW	YW	Milk	REA	Fat
	+0.6	+44	+85	+21	+0.50	+0.025

RBM TOTAL IMPACT A316
POSS TOTAL IMPACT 745
ALC BLACKBIRD I04U

RBM PRINCESS A48
TLC COWBOY UP 7211
RBM PRINCESS Y212

TC TOTAL 410
POSS BLACKCAP 5116
MYTTY IN FOCUS
ALC BLACKBIRD 6707
SITZ UPWARD 307R
JAR ANNIE 5129 976
RIVER HILLS OBJECTIVE T195
1407S OF R B M 314

Out of a first calf heifer. Top 10% SQG - Sire sold in 2014 to Thompson.

81 RBM BLACKCAP C156

Tag#: A95 Reg. #: 18355616 Tattoo: C156

BD: 02/19/15 BW: 90 WW/Ratio: 609/95

EPDs	BW	WW	YW	Milk	REA	Fat
	+4.2	+56	+101	+17	+0.31	-0.006

R5 RAMBO 1531
R5 RAMBO 753
SCR MISS ESSO 70650

RBM BLACKCAP A95
J&J IRON MOUNTAIN 437
RBM BLACKCAP X077

S S OBJECTIVE T510 0T26
NORTHFORK FAME 1705
SCR SUPERIOR 210M-50203
SCR MISS ESSO 50643
S A V IRON MOUNTAIN 8066
J&J DAKOTA STAR 437
GENETICS BY DESIGN 049
RIVER HILLS BLACKCAP U200

Out of a first calf heifer. Top 20% WW, 20% YW, 20% SF, 25% SB

Registered Angus Bred Cows

These bred cows have produced bulls and females that we have sold in prior sales. These cows are not culls; it is strictly a calving date sort of anything after 3/1/16. Some of these bred cows will have calved by sale time. All cows have been on our herd health program. Calves will be treated as normal...tagged, weighed, tattooed and given their first set of shots. The cows will all have blood drawn to meet most all requirements. (Call with any questions.) They all will be repregged and safe in calf. Calving dates are approximate per ultrasound. We would like these cow/pairs to be loaded and to their new owners within a few days after the sale.

RBM IMPRESSION A87

Reg. #: +17712511 BD: 02/16/13 Tattoo: A87

EPDs	BW	WW	YW	Milk	Marb	RE	SB
	+0.5	+47	+86	+23	+0.59	+0.20	+117.43

CONNEALY IMPRESSION
CONNEALY REFLECTION
PEARL PAMMY OF CONANGA 194

RIVER HILLS BLOSSOM R643
WOODHILL ADMIRAL 77K
RIVER HILLS BLOSSOM 4284

BON VIEW NEW DESIGN 878
HAPPY GRILL OF CONANGA 6260
VERMILION DATELINE 7078
PEARL JAM OF CONANGA 6114
S A F FOCUS OF E R
WOODHILL LASS 344-1178
SITZ ALLIANCE 6595
S V F BLACKBIRD BLOSSOM 95J

Bred cows exposed to him from 5/6/15 to 5/26/15

RBM FINAL SOLUTION A28

Reg. #: 17710589 BD: 01/22/13 Tattoo: A28

EPDs	BW	WW	YW	Milk	Marb	RE	SB
	+2.3	+57	+97	+27	+0.33	+0.63	+136.04

CONNEALY FINAL SOLUTION
CONNEALY ANSWER 71
ESTE OF CONANGA 364

RBM ANN BASIN X168
WAR ALLIANCE 9126 6006
H FAME R B M 383

S A V FINAL ANSWER 0035
EURO REEKA OF CONANGA 3539
CONNEALY DANNY BOY
ESTHERA OF CONANGA 842
SITZ ALLIANCE 6595
WAR BANDO 6006 598 4053
WAR HALL OF FAME 8023
MISS 9440 OF R B M 451

Bred cows exposed to him from 5/26/15 to 6/18/15

82 RBM CHARISMA Z223

Tag#: Z223 Reg. #: +17483981 Tattoo: Z223

BD: 02/09/12 BW: 68 WW/Ratio: 713/100

EPDs	BW	WW	YW	Milk	REA	Fat
	+3.7	+65	+117	+41	+0.58	-0.004

VAR ROCKY 80029
 HARB ONWARD 786 J H
 VERMILION LASS 0029

BASIN CHARISMA U691
 EXAR 263C
 BASIN CHARISMA 4866

CONNEALY ONWARD
 H A R B JUANADA ERICA G75 JH
 CONNEALY DATELINE
 VERMILION LASS 8107
 BON VIEW NEW DESIGN 1407
 EXAR JUNE C 3577
 BASIN RAINMAKER 747L
 BASIN CHARISMA 1474

Well when the decision was made to sell these bred cows, it wasn't until we sorted we realized that Z223 was in this group. This decision is hard as this cow is young and produced a top selling bull in 2015 to Haugen Cattle Company for \$20,000.00. Production WW 2 @ 116, YW 2 @ 111, IMF 1 @ 118, REA 1 @ 110. Top 1% WW, 1% YW, 25% Marb, 20% REA, 2% SW, 3% SF, 25% SG, 25% SQG, 10% SB - Dam is the U691 cow which is the dam of Lot 22. The opportunity is here - take advantage. Approx. Due Date: 03/14/16



RBM SHREK B41 - Son of Lot 82
 Sold in 2015 Sale to Haugen Cattle Company for \$20,000

83 RBM FOCUS Y240

Tag#: Y240 Reg. #: 17693340 Tattoo: Y240

BD: 02/15/11

EPDs	BW	WW	YW	Milk	REA	Fat
	+1.3	+43	+82	+25	+0.20	+0.012

S A W PRIME FOCUS 9053
 MYTTY IN FOCUS
 SAW MISS PRIME FRONTIER 7053

RBM EVENING TINGE 924
 TC TOTAL 410
 PRAIRIEDGE EVENING TINGE 21

S A F FOCUS OF E R
 MYTTY COUNTLESS 906
 THREE TREES PRIME CUT 0145
 SAW MISS PIONEER FRONTIER
 BON VIEW NEW DESIGN 208
 TC ERICA EILEEN 2047
 BON VIEW BANDO 598
 PRAIRIEDGE EVENING TINGE 14B

WW 2 @ 103. Approx. Due Date: 03/06/16

85 RBM ANVIL LASSIE Y97

Tag#: Y97 Reg. #: 17153583 Tattoo: Y97

BD: 02/02/11 BW: 81 WW/Ratio: 495/88

EPDs	BW	WW	YW	Milk	REA	Fat
	+2.8	+36	+64	+23	-0.12	+0.011

CAR EFFICIENT 534
 K C F BENNETT EFFICIENT
 CAR MISS SUSIE 308

1407C OF R B M 864
 CHESTNUT NEW DESIGN 112
 L A R MISS EXTRA 9805

CONNEALY FOREFRONT
 K C F BL MISS 5522 E152
 CAR DUKE 104
 C A R MISS TRENDY 449
 BON VIEW NEW DESIGN 1407
 C W PRIDE ERICA 476 L O
 MILLERS EXTRAORDINARY C205
 ANVIL LASSIE 500A-B32-973

One daughter in herd. Son is Lot 29. Approx. Due Date: 03/16/16

87 RBM QUEEN Y28

Tag#: Y28 Reg. #: 17136006 Tattoo: Y28

BD: 01/08/11 BW: 50 WW/Ratio: 549/97

EPDs	BW	WW	YW	Milk	REA	Fat
	-2.5	+35	+68	+25	+0.38	-0.064

SYDGEN C C & 7
 S A F CONNECTION
 SYDGEN FOREVER LADY 4087

SYDGEN 4646 ALLY 8131
 SYDGEN ALLY 4646
 SYDGEN ROYAL QUEEN 413

SVF GDAR 216 LTD
 S A F ROYAL QUEEN 5084
 SYDGEN 1407 CORONA 2016
 S A F FOREVER LADY 8292
 SYDGEN ALLY
 S A F FOREVER LADY 260
 B/R NEW DESIGN 323
 S A F ROYAL QUEEN 0105

Son is Lot 24. Approx. Due Date: 03/12/16

84 RBM QUEEN BARNEY Y232

Tag#: Y232 Reg. #: 17136010 Tattoo: Y232

BD: 03/09/11 BW: 92 WW/Ratio: 652/115

EPDs	BW	WW	YW	Milk	REA	Fat
	+6.1	+39	+64	+25	+0.13	-0.027

H&K CC&7 H198
 SYDGEN C C & 7
 BLACKCAP EMPRESS ELLSTON T15

GBS MISS KOUPALS 9126 9938
 GBS KOUPALS 402 9126
 G B S QUEEN PRIDE 8940

S A F CONNECTION
 SYDGEN FOREVER LADY 4087
 K L B HI FLYER 76RE
 BLACKCAP EMPRESS ELLSTON R30
 KOUPALS B&B PRECISION 402
 G B S WESTWIND 8717
 V D A R TRAVELER 275
 G B S NEW TREND 831 8177

Son sold in 2014 to Olsen. Approx. Due Date: 03/23/16

86 RBM BLANCHE Y52

Tag#: Y52 Reg. #: 18320610 Tattoo: Y52

BD: 01/14/11 BW: 74 WW/Ratio: 596/105

EPDs	BW	WW	YW	Milk	REA	Fat
	+1.1	+53	+93	+30	+0.46	-0.014

SYDGEN C C & 7
 S A F CONNECTION
 SYDGEN FOREVER LADY 4087

OX BOW BLANCHE 896
 B C C BUSHWACKER 41-93
 OX BOW BLANCHE 597

SVF GDAR 216 LTD
 S A F ROYAL QUEEN 5084
 SYDGEN 1407 CORONA 2016
 S A F FOREVER LADY 8292
 SYDGEN ALLY
 R C ANITA T BANDO 918903
 K C F BENNETT COALITION SCC
 OX BOW BLANCHE 314

WW 3 @ 107. Approx. Due Date: 03/02/16

88 RBM ANGUS LADY Y19

Tag#: Y19 Reg. #: 16984201 Tattoo: Y19

BD: 01/06/11 BW: 67 WW/Ratio: 685/121

EPDs	BW	WW	YW	Milk	REA	Fat
	+0	+59	+102	+30	+0.59	-0.005

SYDGEN C C & 7 S A F CONNECTION SVF GDAR 216 LTD
 S A F ROYAL QUEEN 5084
 SYDGEN FOREVER LADY 4087 SYDGEN 1407 CORONA 2016
 S A F FOREVER LADY 8292
GBS MISS FINAL ANSWER 3768 S A V FINAL ANSWER 0035 SITZ TRAVELER 8180
 S A V EMULOUS 8145
 GBS MISS KOUPALS 402 2546 KOUPALS B&B PRECISION 402
 GBS ANGUS LADY 8241

Production WW 3 @ 107, YW 2 @ 104, IMF 2 @ 108, REA 2 @ 102 - Son sold in 2014 to Vernlund. If you want a cow with a look yet is big bellied and sound, look at her. This cow I think she is donor quality. I know this cow has the potential to raise a great one no matter what sire or breed. Top 15% BW, 10% WW, 10% YW, 20% SC, 2% Doc, 10% Milk, 10% CW, 20% RE, 2% SW, 10% SF, 10% SB - Son is Lot 59. Approx. Due Date: 03/27/16

90 RBM SUNSHINE X211

Tag#: X211 Reg. #: 16791239 Tattoo: X211

BD: 02/25/10 BW: 95 WW/Ratio: 651/101

EPDs	BW	WW	YW	Milk	REA	Fat
	+3.0	+45	+82	+18	+0.20	-0.024

RIVER HILLS OBJECTIVE T195 S S OBJECTIVE T510 0T26 S S TRAVELER 8807 T510
 S S MISS RITA R011 7R8
 BR MIDLAND
 RIVER HILLS BARBARA R330 RIVER HILLS NAOMI 395N
 RIVER HILLS NAOMI 395N
NAVIGATOR 665 R B M BALDRIDGE NAVIGATOR N5 BALDRIDGE KABOOM K243 KCF
 BALDRIDGE FOREVER LADY K856
 SUNSHINE TRAVELER OF IAR 731 SITZ TRAVELER 9929
 POWER SUNSHINE OF I A R 136

Two daughters retained. Approx. Due Date: 03/18/16

92 RBM BLACKETTE LADY X005

Tag#: FB0853 Reg. #: 16796870 Tattoo: X005

BD: 12/31/09 BW: 85 WW/Ratio: 636/106

EPDs	BW	WW	YW	Milk	REA	Fat
	+2.8	+50	+87	+25	+0.22	-0.022

GENETICS BY DESIGN 049 B/R NEW DESIGN 036 V D A R NEW TREND 315
 B/R BLACKCAP EMPRESS 76
 G G CLARA 859 J R JUICE 2005
 G G CLARA 200
OX BOW BLACKETTE LADY 853 HYLINE RIGHT TIME 338 LEACHMAN RIGHT TIME
 HYLINE PRIDE 265
 OX BOW BLACKETTE LADY 278 GARRISON 8128 DYNAMITE
 GDAR BLACKETTE LADY 720

Top 20% SB - Production WW 4 @ 104, YW 2 @ 104. Approx. Due Date: 03/18/16

94 RBM TOTAL 1318

Tag#: FB582 Reg. #: 16183378 Tattoo: 1318

BD: 03/02/08 BW: 87 WW/Ratio: 620/100

EPDs	BW	WW	YW	Milk	REA	Fat
	+3.7	+50	+90	+11	+0.39	+0.020

TC TOTAL 410 BON VIEW NEW DESIGN 208 B/R NEW DESIGN 036
 BON VIEW ERICA 443
 TC ERICA EILEEN 2047 TWIN VALLEY PRECISION E161
 TC ERICA EILEEN 5116
MISS NEUTRON R B M X3 582 H&K NEUTRON 377 X3 S A NEUTRON 377
 MISS BLACKCAP ELLSTON L759
 MISS STOCKMAN B H 430
 MISS SKY OF B F 1850
 MISS ERICA OF M B 4854

Son sold in 2011 to Eberhart and Bessler in 2012. One daughter retained in herd. Daughter sold in 2013 to Olson. Son is Lot 45. Approx. Due Date: 03/02/16

89 RBM RITA X271

Tag#: X271 Reg. #: 16791238 Tattoo: X271

BD: 03/18/10 BW: 95 WW/Ratio: 728/113

EPDs	BW	WW	YW	Milk	REA	Fat
	+1.8	+54	+92	+25	+0.13	-0.028

RIVER HILLS OBJECTIVE T195 S S OBJECTIVE T510 0T26 S S TRAVELER 6807 T510
 S S MISS RITA R011 7R8
 BR MIDLAND
 RIVER HILLS NAOMI 395N
 B/R NEW DESIGN 036
RBM FRONTIER 466 B/R NEW FRONTIER 095 WHITE FENCE PRIDE H1
 SUMMITCREST HI FLYER 3B18
 SIKS PHRED 68380 SIKS KRUGERRAND 6838

Production WW 4 @ 104, YW 3 @ 107, IMF 3 @ 110, REA 3 @ 104 - Son sold in 2013 to Thompson, 2014 to Niles, and 2015 to Hansen. Approx. Due Date: 03/12/16

91 RBM EXT BAND X149

Tag#: FBS8082 Reg. #: 16796781 Tattoo: X149

BD: 02/06/10 BW: 95 WW/Ratio: 620/104

EPDs	BW	WW	YW	Milk	REA	Fat
	+3.7	+48	+92	+31	+0.27	+0

WAR ALLIANCE 9126 6006 SITZ ALLIANCE 6595 SITZ TRAVELER 8180
 SITZ BARBARAMERE JET 2698
 BON VIEW BANDO 598
 WAR EXT 4053 22 2107
 SYDGEN TRIUMPH C A FUTURE DIRECTION 5321
 S A F ROYAL LASS 1002
SYDGEN EXT 8082 PAWS UP EXT 2023 LEACHMAN POPULAR DESIGN3003J
 G A R EXT 1696

Production WW 4 @ 103, YW 2 @ 112, IMF 2 @ 107, REA 2 @ 104 - Son sold in 2014 to Seehafer and 2015 to Kasuske. Daughter is Lot 75. Approx. Due Date: 03/02/16

93 RBM EVENING TINGE 924

Tag#: P924 Reg. #: 16438291 Tattoo: 924

BD: 02/13/09 BW: 78 WW/Ratio: 604/96

EPDs	BW	WW	YW	Milk	REA	Fat
	+2.7	+48	+85	+21	+0.25	-0.013

TC TOTAL 410 BON VIEW NEW DESIGN 208 B/R NEW DESIGN 036
 BON VIEW ERICA 443
 TWIN VALLEY PRECISION E161
 TC ERICA EILEEN 5116
 TEHAMA BANDO 155
 BON VIEW DORA 56
PRAIRIEDGE EVENING TINGE 21 TC RANCHER 056
 PRAIRIEDGE EVENING TINGE 14B PRAIRIEDGE EVENING TINGE 9

Production YW 2 @ 101, IMF 2 @ 104, REA 2 @ 100 - Son sold in 2014 to Olsen and 2015 to Parkhurst. Approx. Due Date: 03/02/16

95 WOODHILL EVERGREEN 439-88M

Tag#: 88M Reg. #: 14228241 Tattoo: 88M

BD: 03/19/02 BW: 80 WW/Ratio: 619/101

EPDs	BW	WW	YW	Milk	REA	Fat
	+0.5	+47	+92	+18	+0.22	+0.016

CIRCLE A 216 LTD 9377 SVF GDAR 216 LTD TRAVELER 124 G D A R
 G D A R FOREVER LADY 718
 LEACHMAN RIGHT TIME
 GT MISS TRAVELER 58
WOODHILL EVERGREEN 786-439 WOODHILL EVERGREEN 58-736 ANKONIAN CORNHUSKER
 GT MISS TRAVELER 58
 LEACHMAN RIGHT TIME
 GT MISS TRAVELER 58

Production BW 10 @ 98, WW 10 @ 103, YW 6 @ 103, IMF 20 @ 111, REA 20 @ 101 - Dam of RBM 112 Evergreen Rito 657 that sold in 2008 to Morris & Miller, Fox and CJ Angus. Son is Lot 46. Top 15% WW, 10% YW, 15% CW, 3% SF, 15% SB. Approx. Due Date: 03/04/16

Commercial Bred Heifers

Lots 96-106 - Bred to RBM CC7 Y40. Due 3/24/16. Peach Tags.

Lots 107-114 - Bred to JAR Passport 2120 425. Due 3/29/16 - 4/23/16. Blue Tags.

Lots 115-120 - Bred to JAR Passport 2120 425. Due 4/25/16 - 5/22/16. Red Tags.

RBM CC7 Y40

Reg. #: 16984247 BD: 01/11/11 Tattoo: Y40

EPDs	BW	WW	YW	Milk	Marb	RE	\$B
	-3.8	+39	+82	+38	+0.91	-0.03	+109.22

SYDGEN C C & 7
 S A F CONNECTION
 SYDGEN FOREVER LADY 4087

ALC BLACKBIRD 104U
 MYTTY IN FOCUS
 ALC BLACKBIRD 6707

SVF GDAR 216 LTD
 S A F ROYAL QUEEN 5084
 SYDGEN 1407 CORONA 2016
 S A F FOREVER LADY 8292
 S A F FOCUS OF E R
 MYTTY COUNTESS 906
 CONNEALY LEAD ON
 BALDRIDGE BLACKBIRD M868

Service sire for Lots 96-106 (peach tag group).

JAR PASSPORT 2120 425

[DDF]

Reg. #: 18008879 BD: 01/26/14 Tattoo: 000

EPDs	BW	WW	YW	Milk	Marb	RE	\$B
	+0.7	+71	+116	+20	+0.57	+0.12	+102.36

CW 7783 PASSPORT 322
 KOUPLS B&B IDENTITY
 THOENE IN FOCUS 765

JAR PRIDE LENA 094 2120
 MOGCK WHISPERING WIND 48
 JAR PRIDE LENA 8158 094

SITZ UPWARD 307R
 B&B ERICA 605
 MYTTY IN FOCUS
 THOENE NEW DESIGN 878-334
 MOGCK WHISPERING WIND 584
 MOGCK ROSEBUD 2576
 G A R NEW DESIGN 5050
 JAR PRIDE LENA 4130 8158

Service sire for Lots 107-114 (blue tag group) and Lots 115-120 (red tag group).

Commercial Yearling Heifers

Lots 201-300 Sell as Commercial Yearling Heifers

These heifers are mostly out of RBM genetics. The heifers are Angus-based and have the cow making look! The heifers are long, feminine and gentle with great genetics to make profitable cows. The heifers will weigh 775-825 on sale day. The heifers are fed to grow and will stay sound and not get fleshy. They are all running together in one 5-10 acre pen. The heifers are on the same vaccination program as the registered cattle. We will sell the heifers in numerical order. The bidder has the option to take 1-100 head in order. Heifers may be fed until May 1-15 at cost - talk to Mike or Ryan prior to the sale to discuss this option.



Thank you

TO OUR PAST BIDDERS AND BUYERS!



Driving the science of better breeding

There's little room for error in the cattle business. Producers need the most advanced information to make smart selection decisions, and Angus Genetics Inc. (AGI) provides it through genomic-enhanced expected progeny differences (GE-EPDs).

GE-EPDs have become the industry standard for herd improvement, building on decades of science-backed genetic evaluation tools originated and maintained through the American Angus Association®, home to the largest and ever-growing single-breed beef cattle database.

EPDs that traditionally contained all pedigree, performance and progeny information now also include results from available genomic, or DNA, tests. Breeders who use genomic technology give buyers access to AGI-generated GE-EPDs that provide:

Increased predictability and decreased risk for young and unproven animals due to enhanced accuracy of EPDs

Better characterization of genetics for difficult-to-measure performance traits (such as carcass traits, maternal traits and feed efficiency)

The ability to make more rapid progress for traits that are important to you, due to:

- more accurate selection
- easier identification of genetic outliers
- the ability to propagate young animals with confidence earlier in their lives

In fact, GE-EPDs on unproven animals have the same amount of accuracy as if they had recorded 8-20 calves, depending on the trait. That's valuable insight, offered regularly through the breed's weekly national cattle evaluation.

Trait	Progeny Equivalent	Trait	Progeny Equivalent
Calving Ease Direct	21	Docility	12
Birth Weight	13	Heifer Pregnancy	10
Weaning Weight	19	Mature Weight	13
Yearling Weight	22	Carcass Weight	10
Milk	14	Carcass Marbling	9
Yearling Height	11	Carcass Rib	11
Yearling Scrotal	14	Carcass Fat	12
Dry Matter Intake	18		

How do you know if EPDs are genomic-enhanced?

Ask your breeder, refer to the registration paper, or look for the AGI GE-EPD logo or those of partnering labs Zoetis (HD50K, i50K) or GeneSeek (GGP-HD, GGP-LD). These images indicate animals for which low-density or high-density genomic testing has been conducted and incorporated by AGI into GE-EPDs.



www.angus.org

Best guarantee in the business – the RBM GUARANTEE

PPF **NEXT STEP** 2036

Reg: AAA 17367599



BW: -1.4
WW: 63
YW: 129
Milk: 35
Marb: 0.10
RE: 0.44
\$B: 136.21

Owners: RBM Livestock, SD
Big Rok Angus, MN
Prairie Pride Angus, ND

Semen Available

Contact owners for
more information.

** The only outcross calving
ease bull that was found
in the 2013 bull sale season.

Sire: SydGen 928 Destination 5420 • Dam: Flying V Miss Pride 426

RBM TR **RHINESTONE** Z38

Reg: EM823104



BW: 1.0
WW: 29
YW: 66
Milk: 15
REA: 0.62
Fat: 0.017

5100 x LT Bluegrass
Sold in our 2013 Bull Sale to
Thomas Ranch, Harrold, SD.
High selling bull for \$15,000.

Semen Available

Contact **T**homas Ranch
for more information.

Sire: LT BLUEGRASS 4017 P • Dam: HC RHINESTONE 5100

Give us a call for more information on these bulls!



Mike & Ryan Bergh Families
44115 155th St.
Florence, SD 57235



Sunday
MARCH 13 2016
1:00 PM
at the ranch • Florence, South Dakota
www.rbmlivestock.com

Address Service Requested